

# Emergenza COVID - Situazione Regioni

## Proiezioni Statistiche<sup>†</sup>

Aggiornato al 22 Aprile 2020

Francesco Furno<sup>†</sup>

### Contents

#### 1 Regioni

1.1	Lombardia	.....
1.2	Emilia-Romagna	.....
1.3	Piemonte	.....
1.4	Marche	.....
1.5	Veneto	.....
1.6	Liguria	.....
1.7	Toscana	.....
1.8	Lazio	.....
1.9	Campania	.....
1.10	Friuli Venezia Giulia	.....
1.11	Puglia	.....
1.12	Abruzzo	.....
1.13	Sicilia	.....
1.14	Valle d'Aosta	.....
1.15	Umbria	.....
1.16	Sardegna	.....
1.17	Calabria	.....
1.18	Molise	.....
1.19	Basilicata	.....

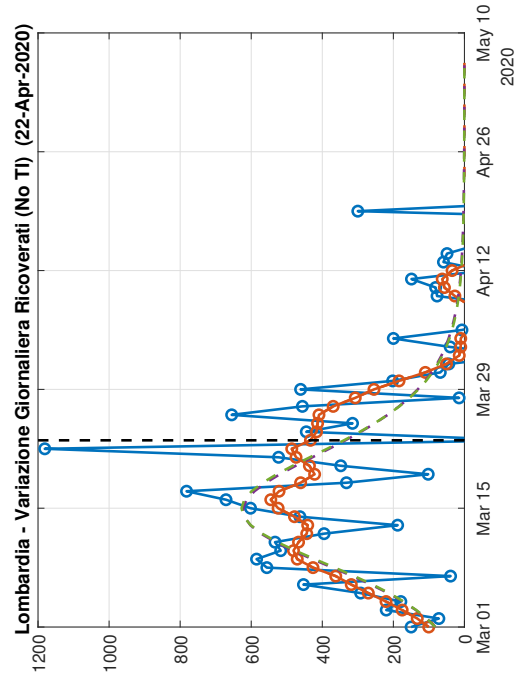
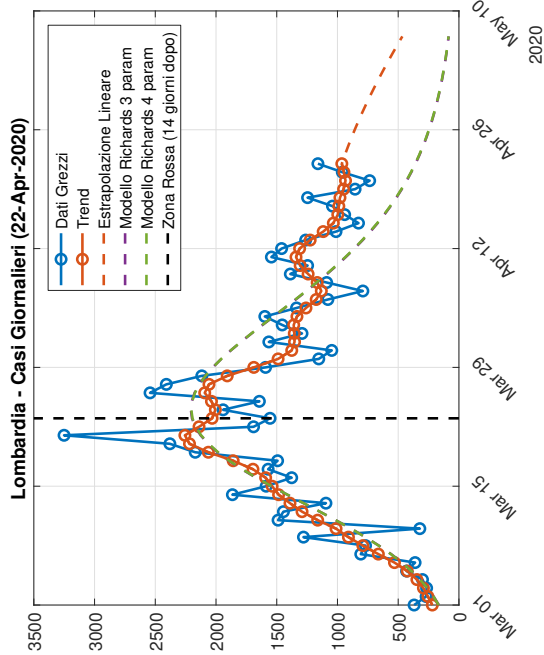
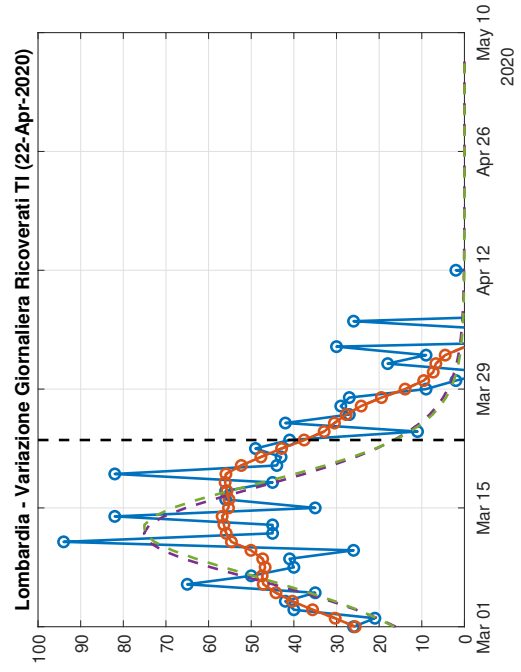
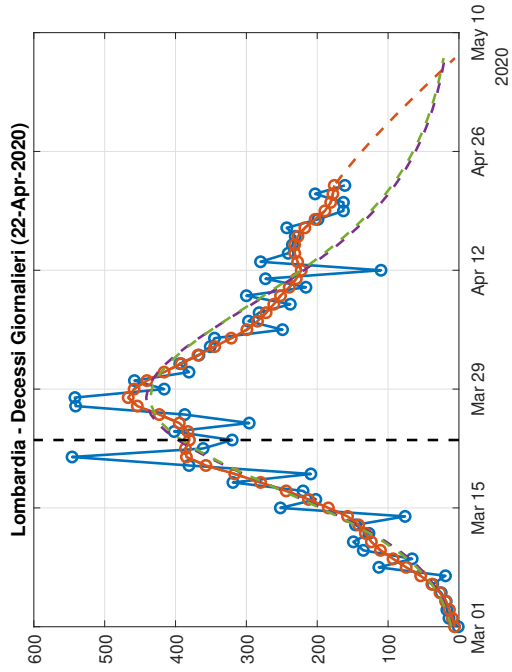
---

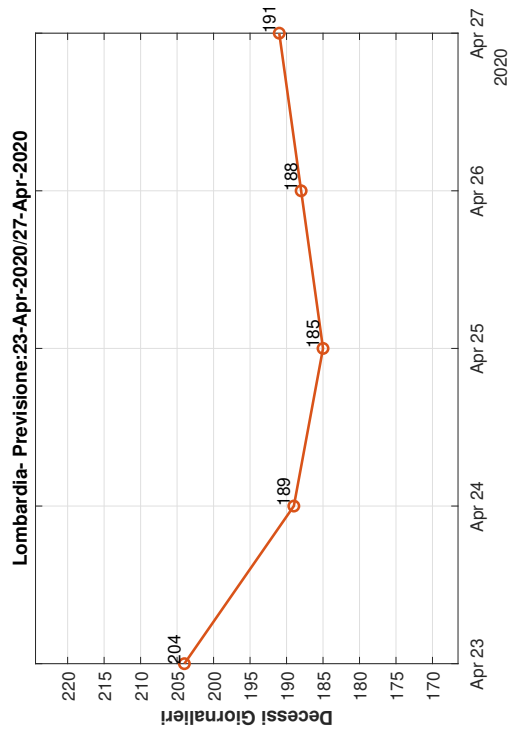
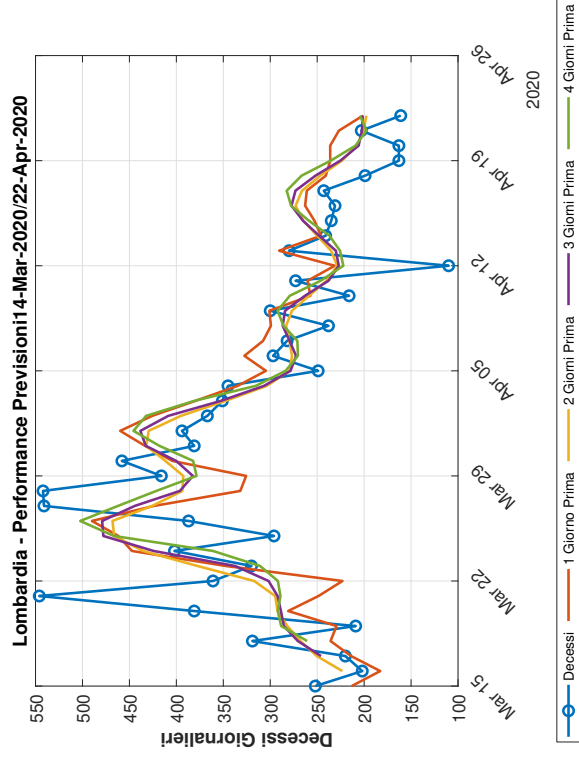
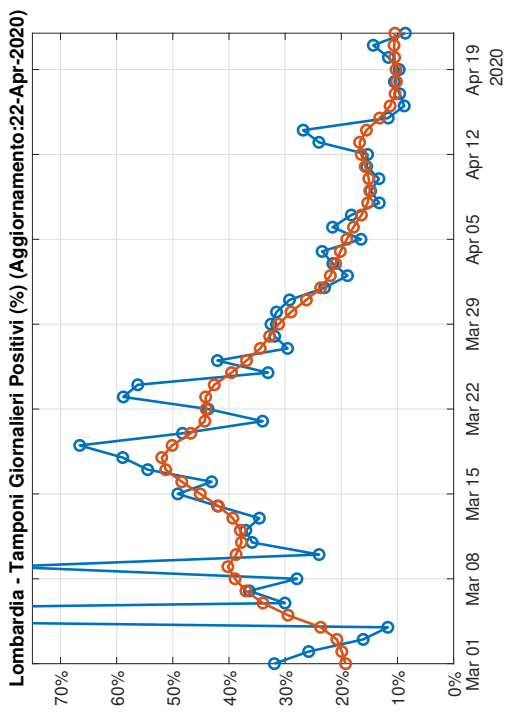
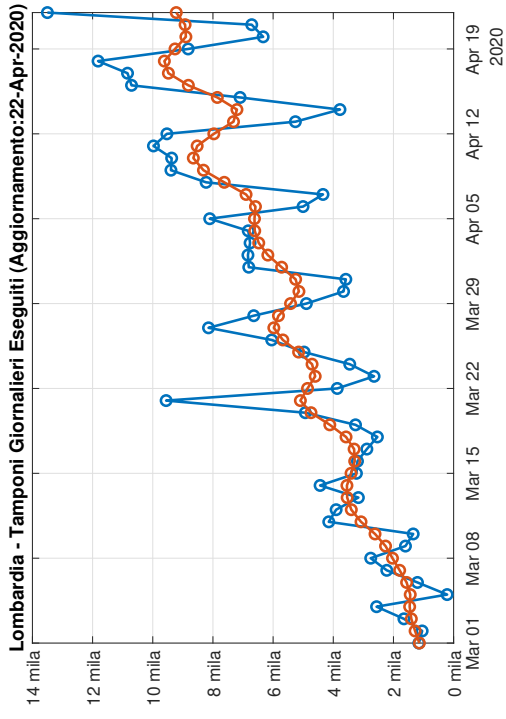
<sup>†</sup>Lo scopo della presente analisi è di fornire una fotografia dello stato *attuale* dell'epidemia COVID nelle varie regioni italiane. Non è basata su modelli epidemiologici matematici, ma sull'analisi statistica (per lo più descrittiva) dei dati regionali resi disponibili dal Ministero.

<sup>†</sup>Dipartimento di Economia, New York University. I dati verranno aggiornati giorno per giorno. Vi prego di scusare eventuali errori e di segnalarli a [francesco.furno@nyu.edu](mailto:francesco.furno@nyu.edu). Fonte dati Protezione Civile: <https://github.com/pcm-dpc/COVID-19/blob/master/dati-regioni/dpc-covid19-ita-regioni.csv>

# 1 Regioni

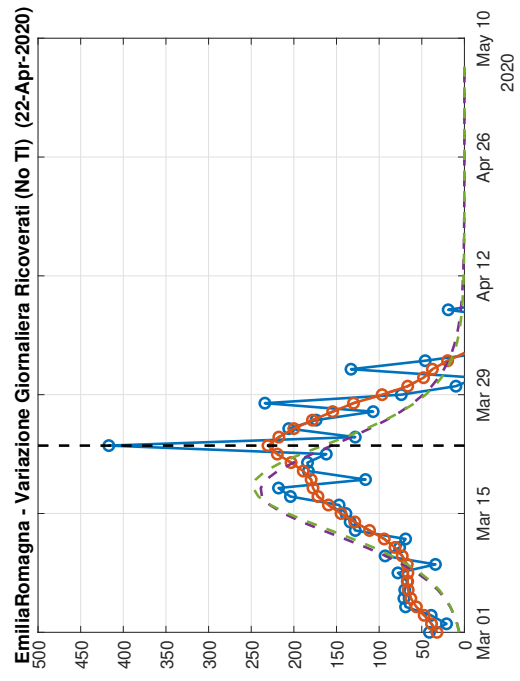
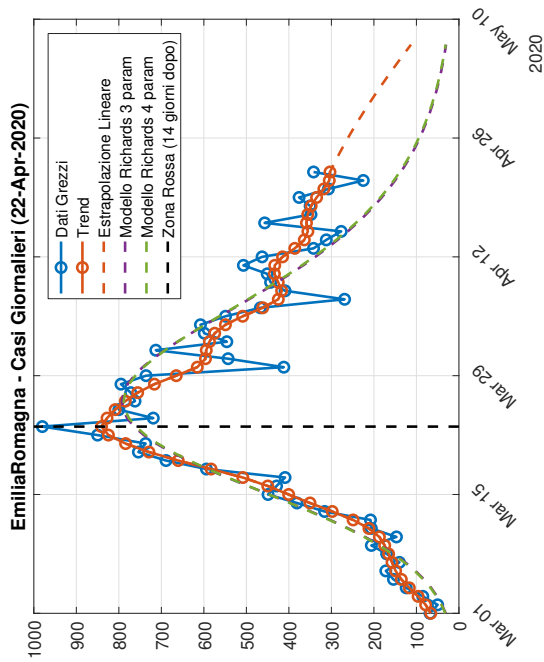
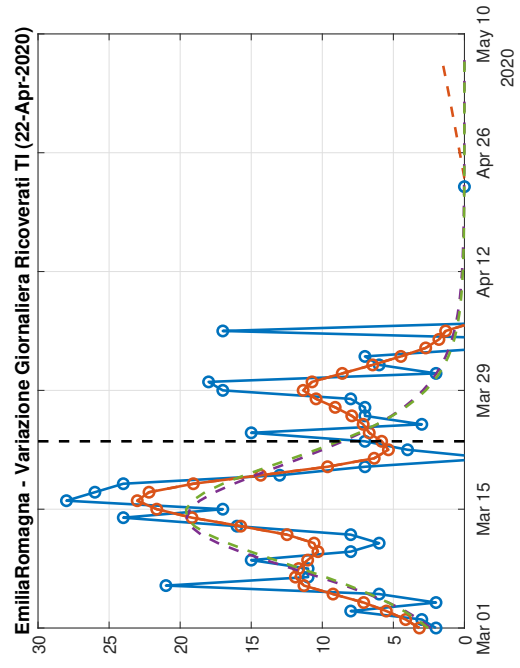
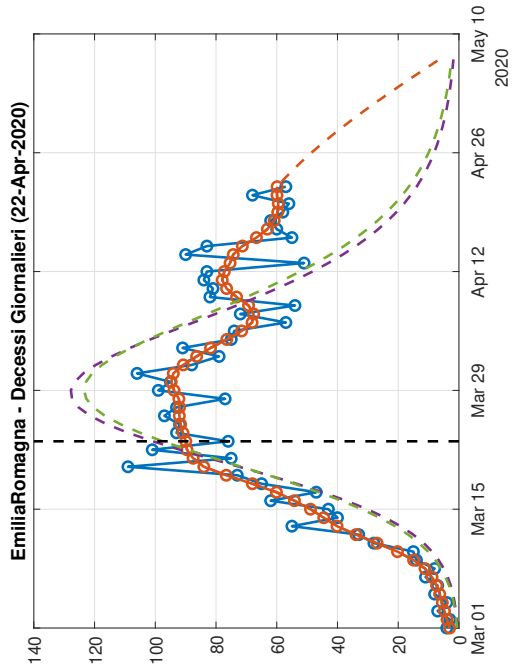
## 1.1 Lombardia



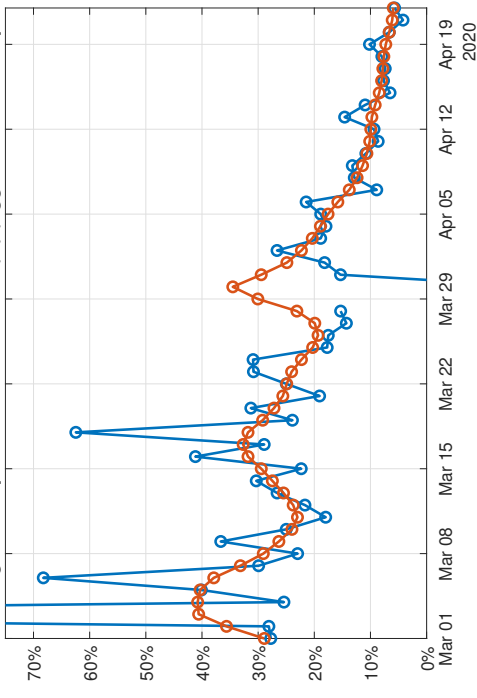


Legend for the Performance Previsioni chart:  
 ● Decessi  
 — 1 Giorno Prima  
 — 2 Giorni Prima  
 — 3 Giorni Prima  
 — 4 Giorni Prima

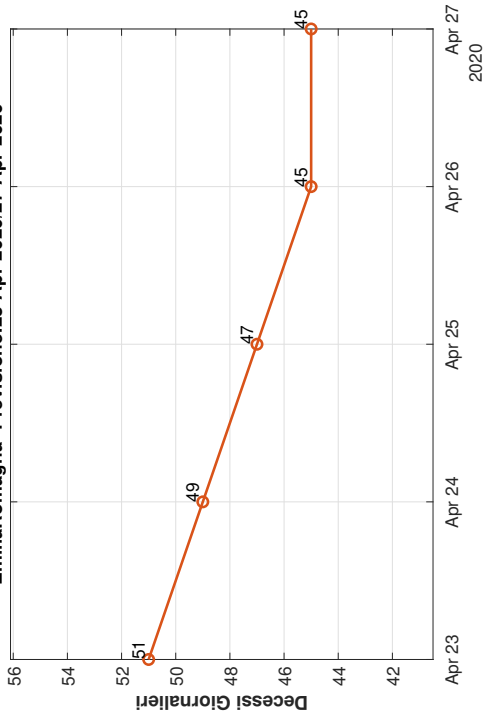
## 1.2 Emilia-Romagna



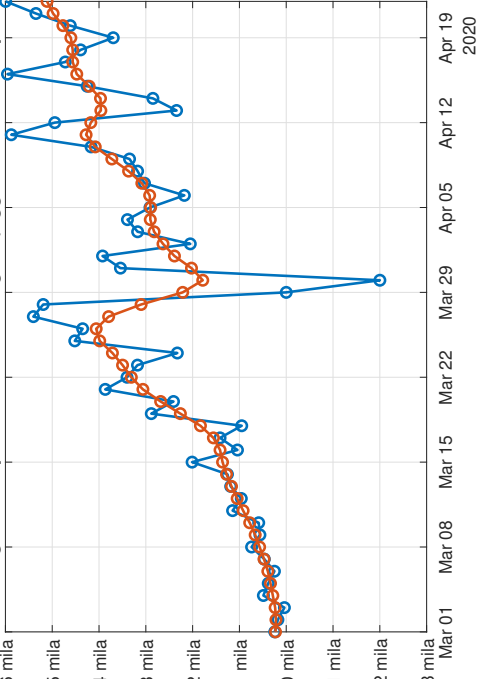
EmiliaRomagna - Tamponi Giornalieri Positivi (%) (Aggiornamento:22-Apr-2020)



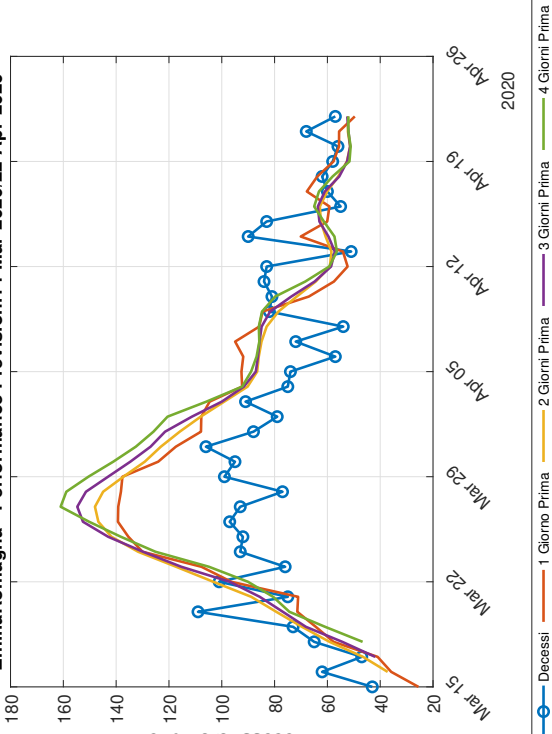
EmiliaRomagna- Previsione:23-Apr-2020/27-Apr-2020



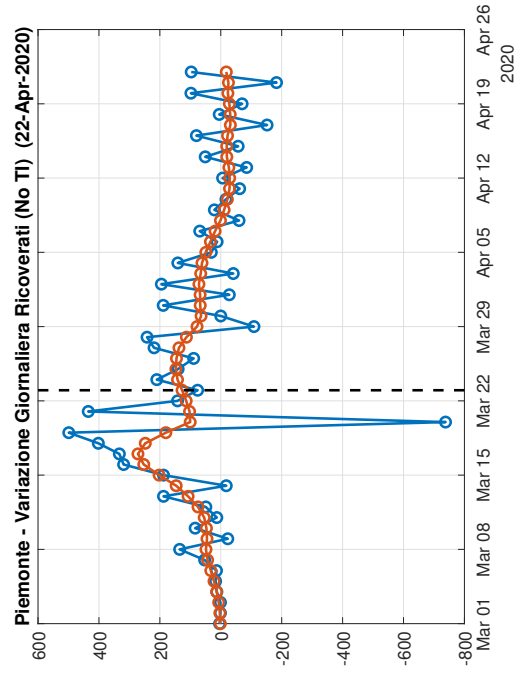
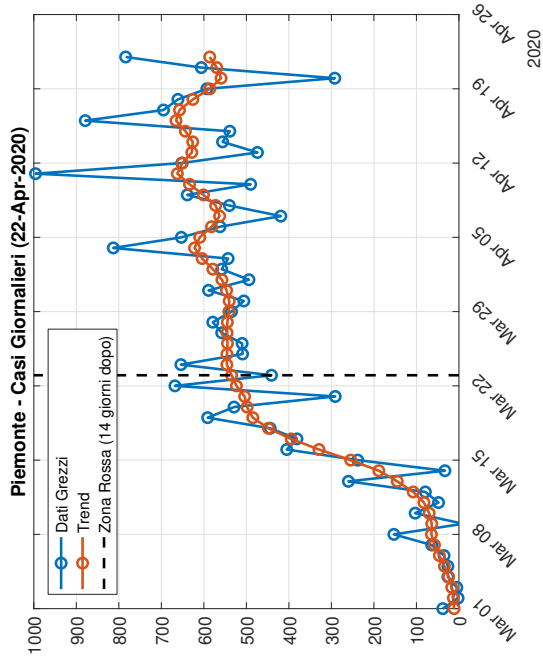
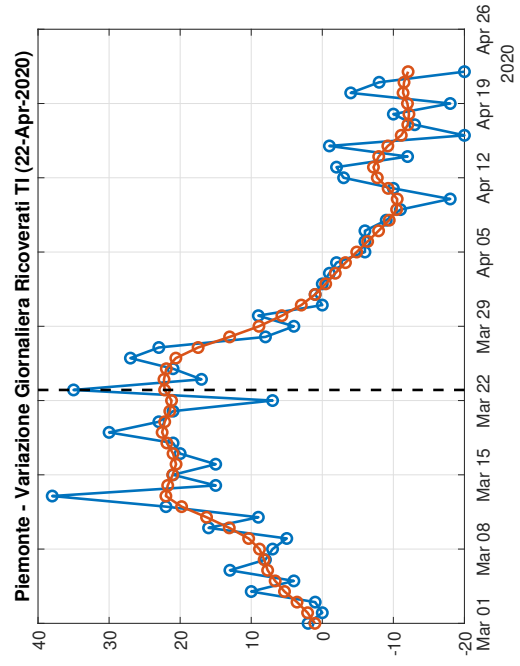
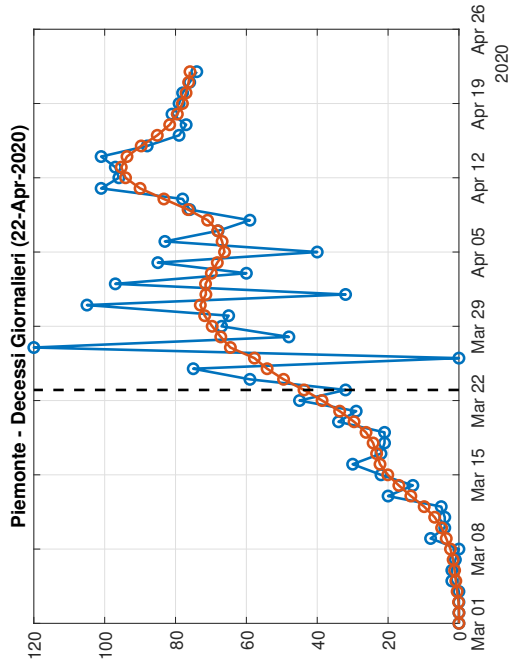
EmiliaRomagna - Tamponi Giornalieri Eseguiti (Aggiornamento:22-Apr-2020)

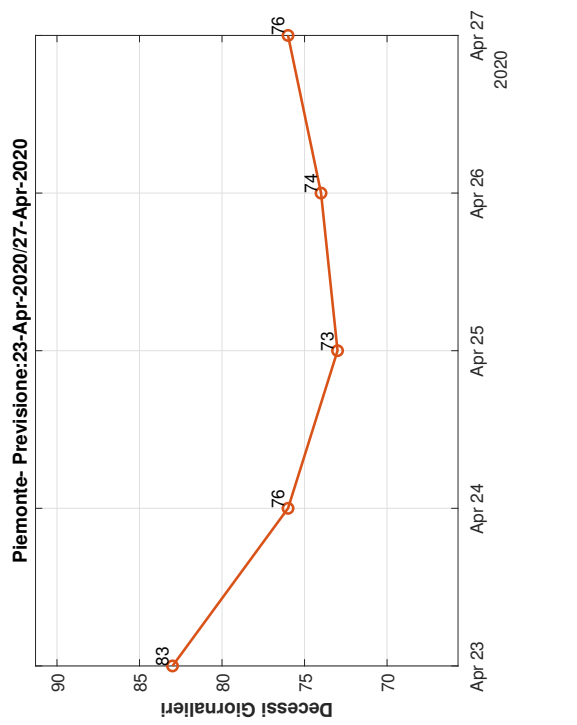
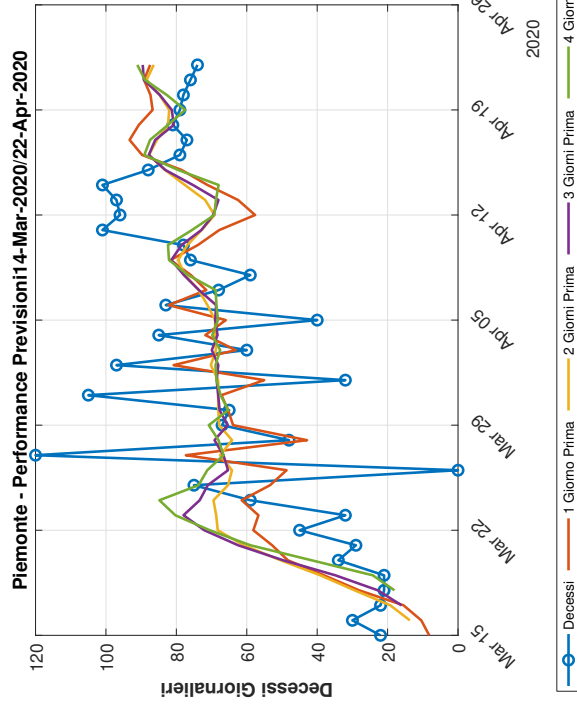
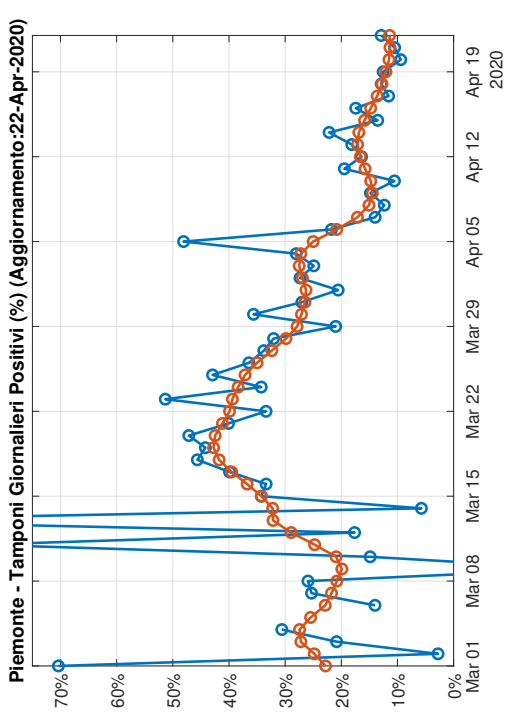
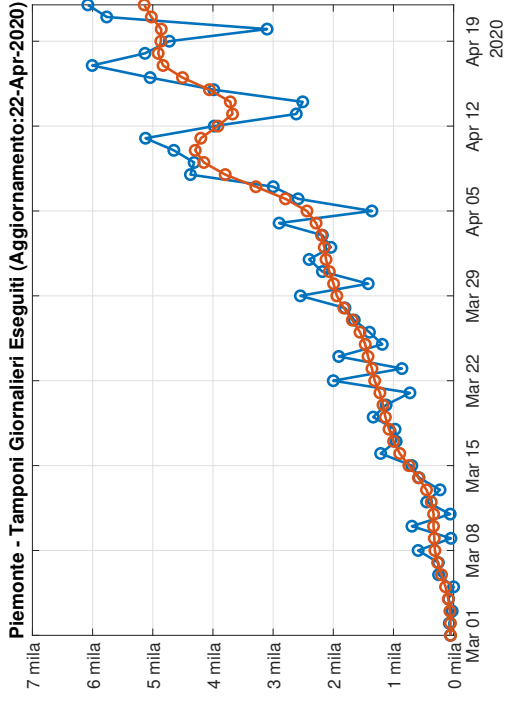


EmiliaRomagna - Performance Previsioni 14-Mar-2020/22-Apr-2020

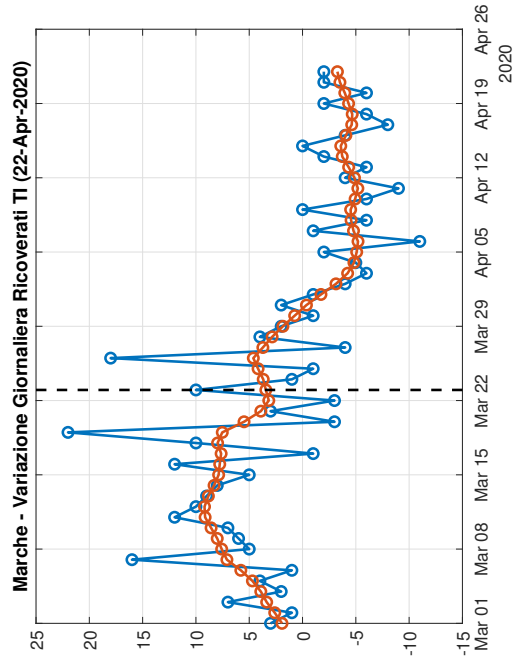
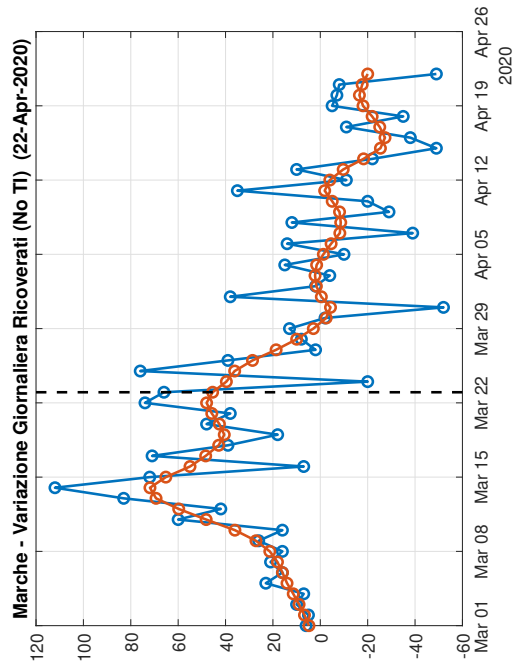
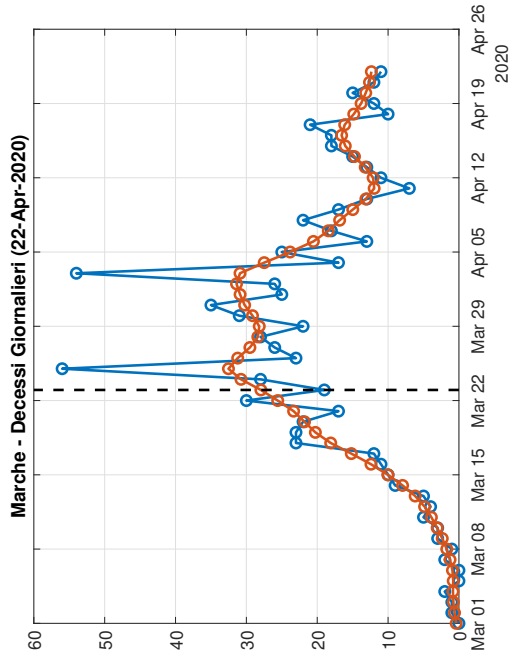
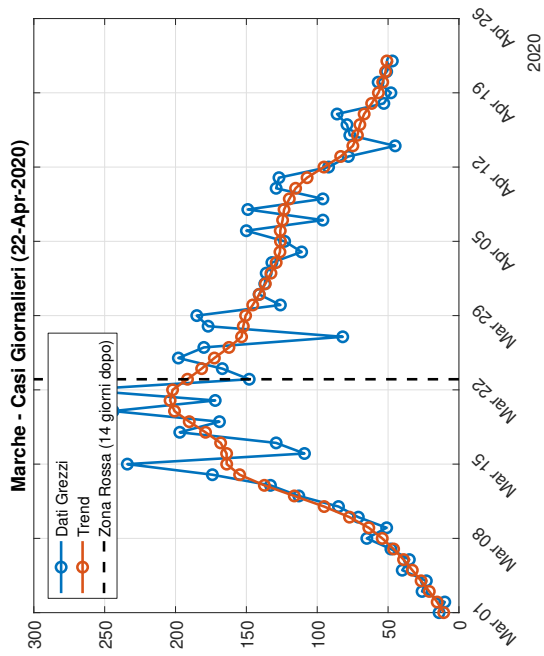


### 1.3 Piemonte

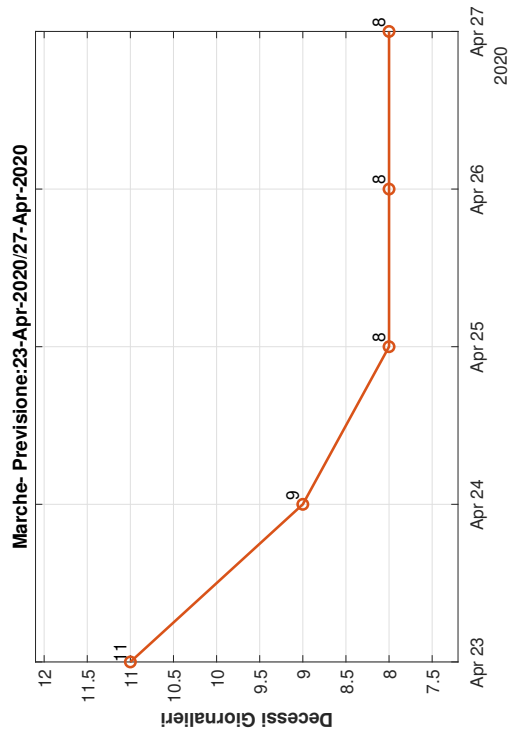
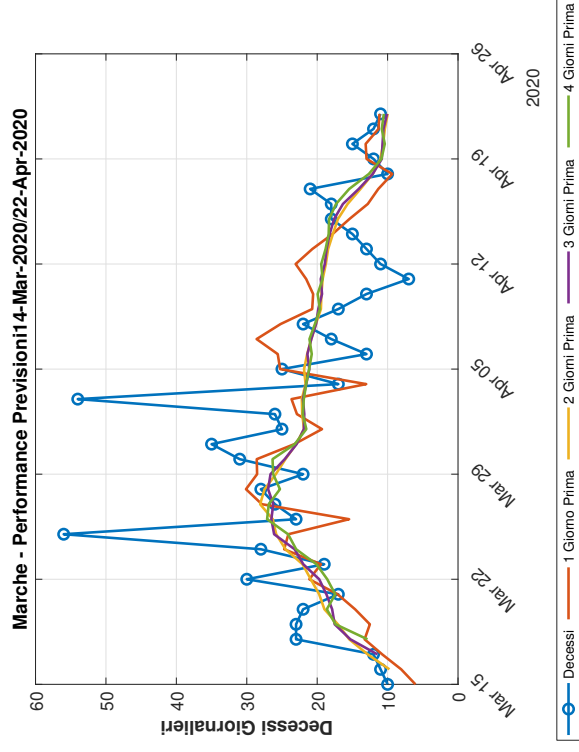
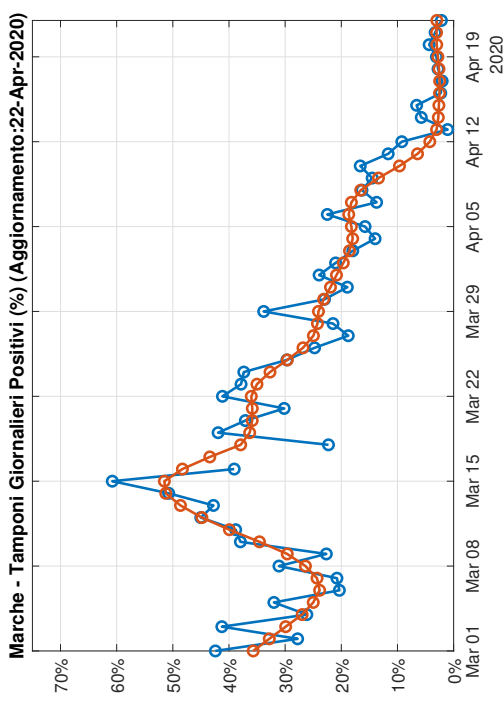
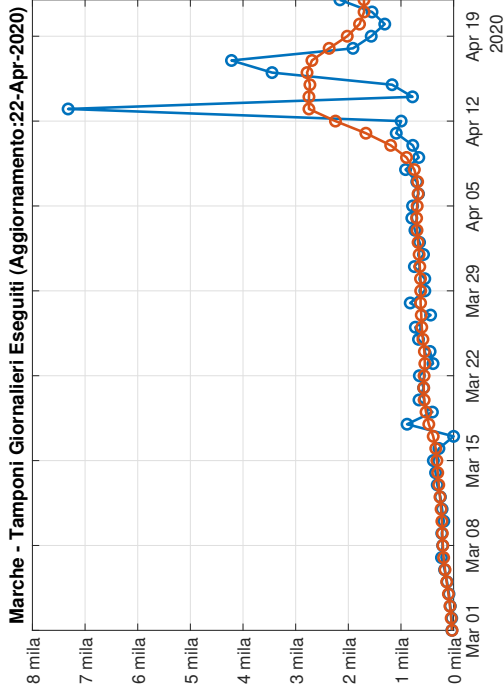




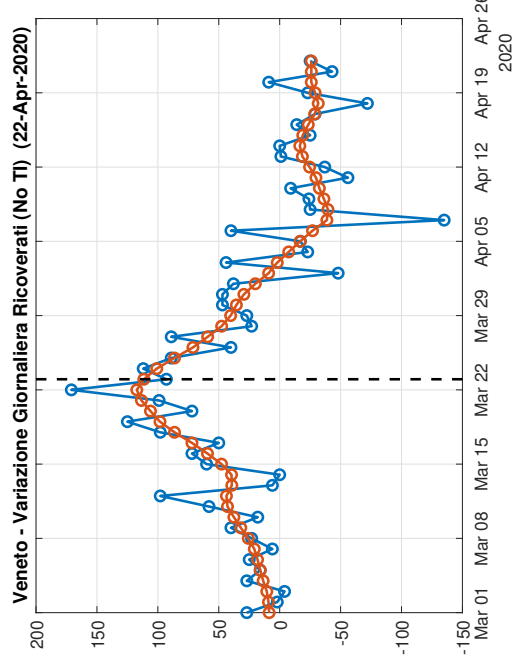
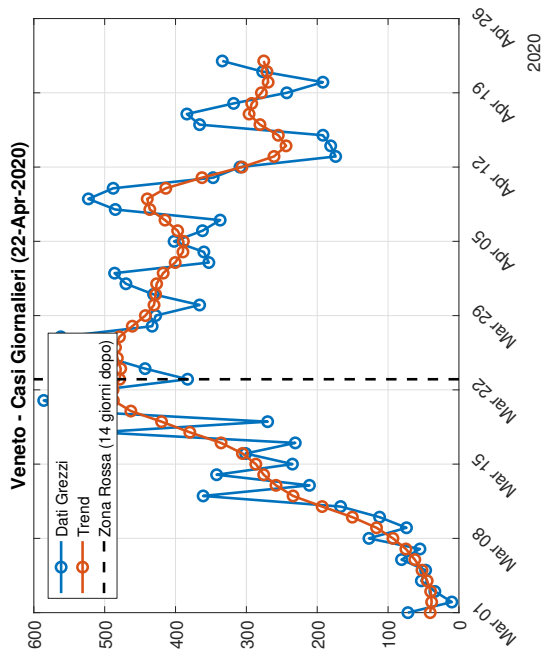
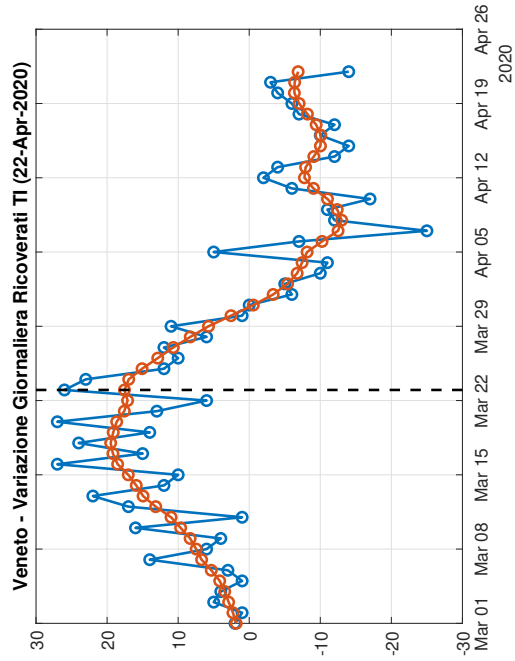
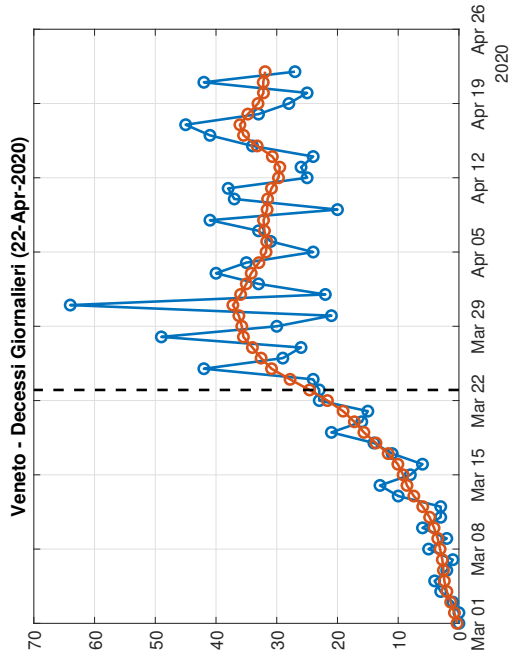
# 1.4 Marche

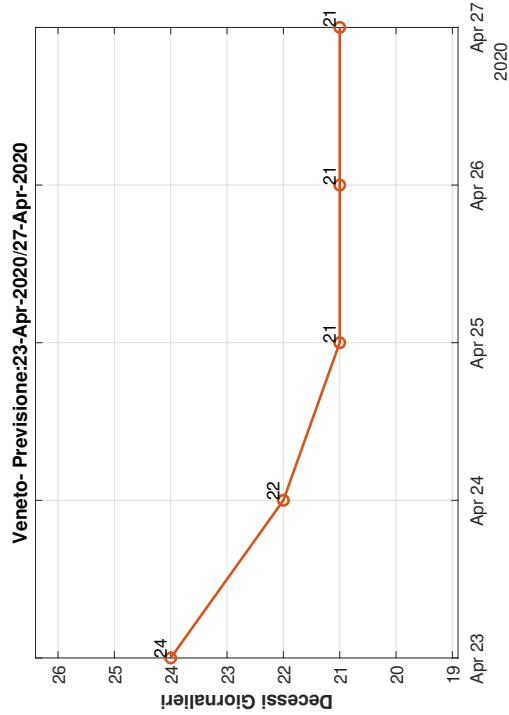
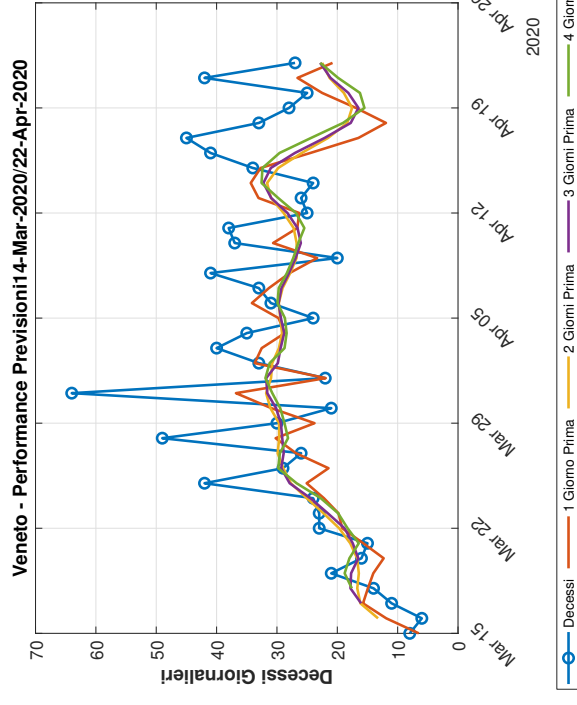
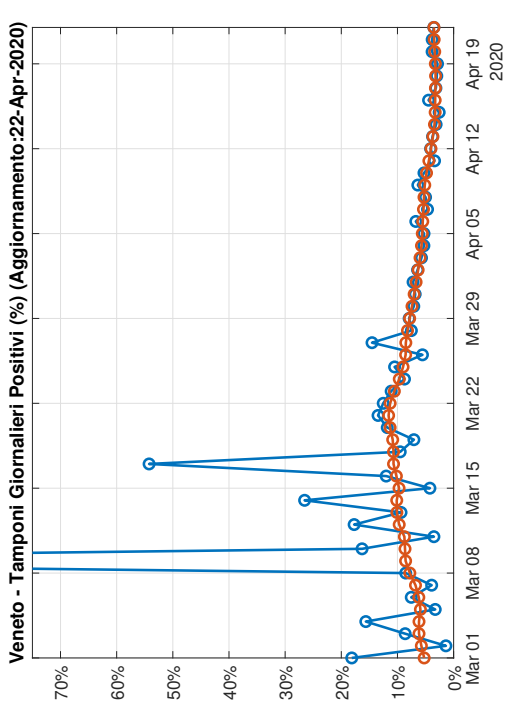
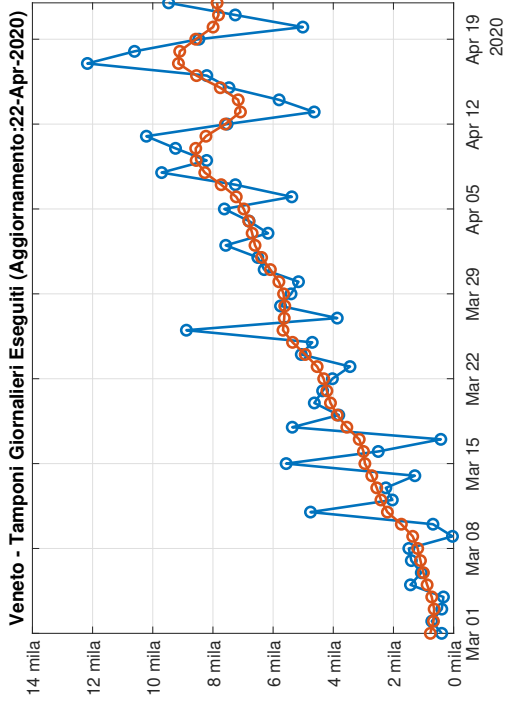




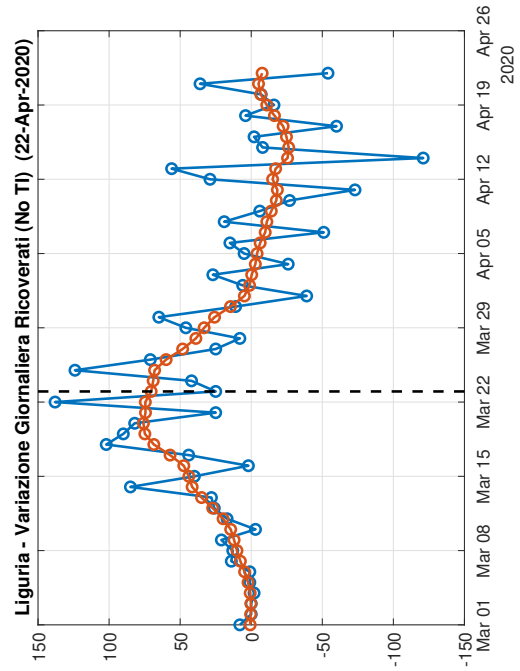
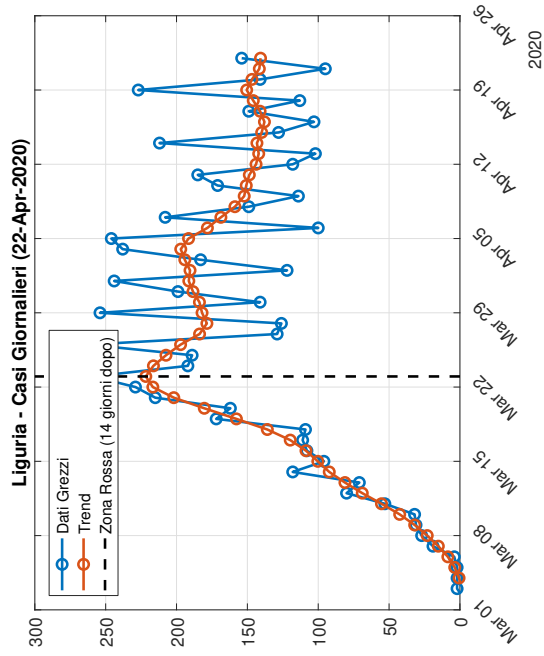
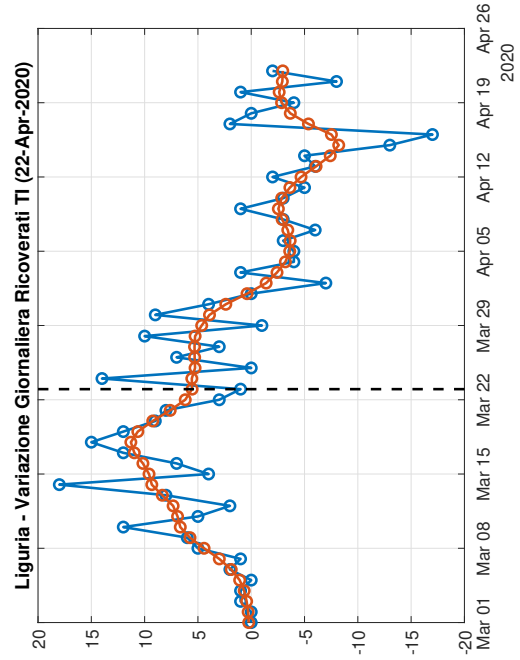
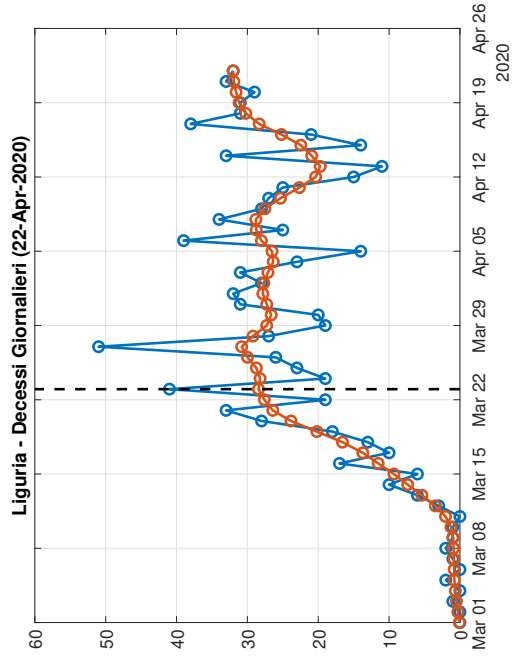


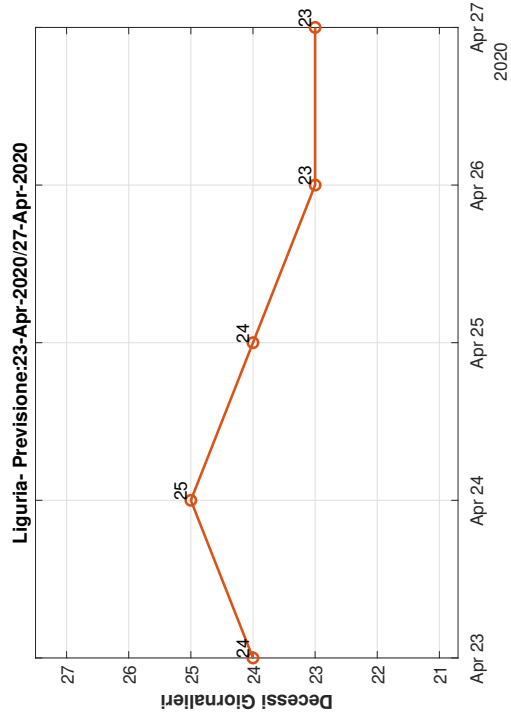
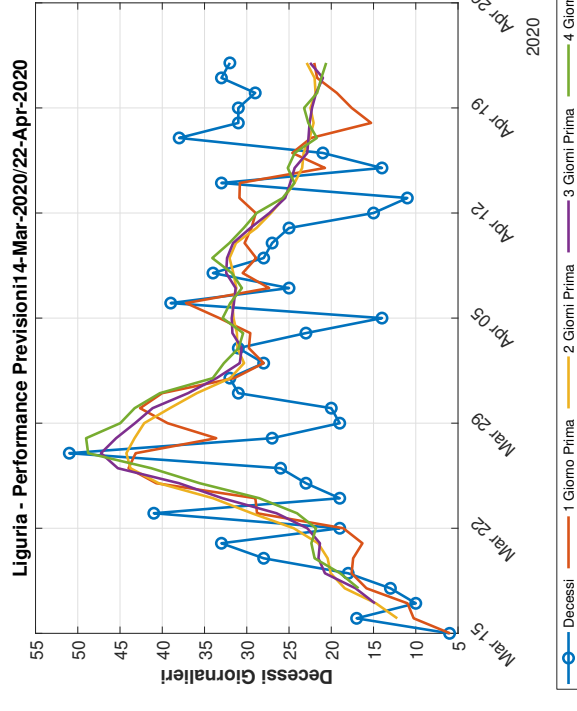
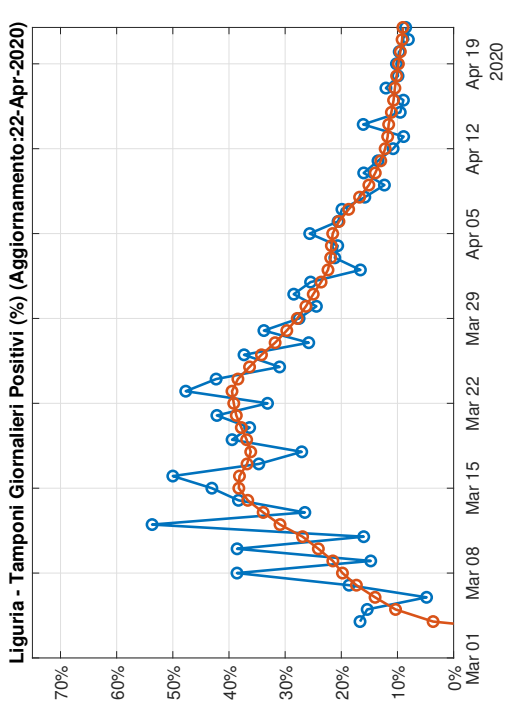
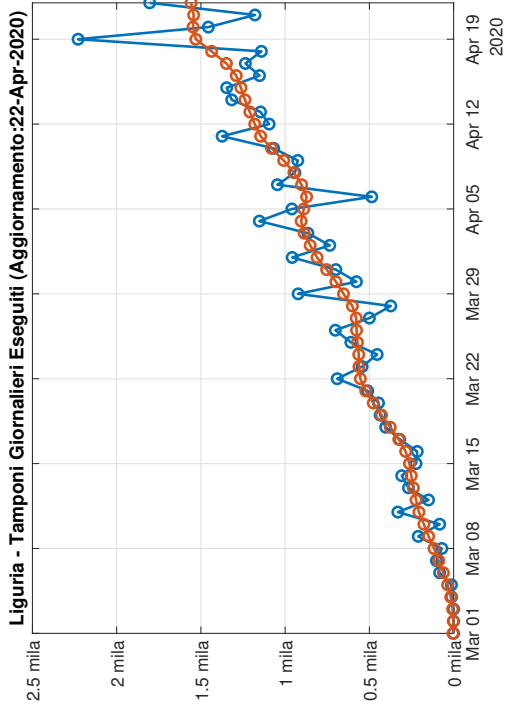
# 1.5 Veneto



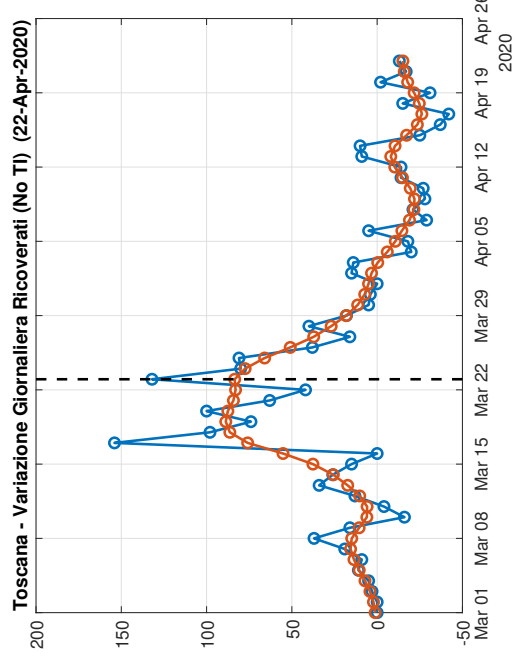
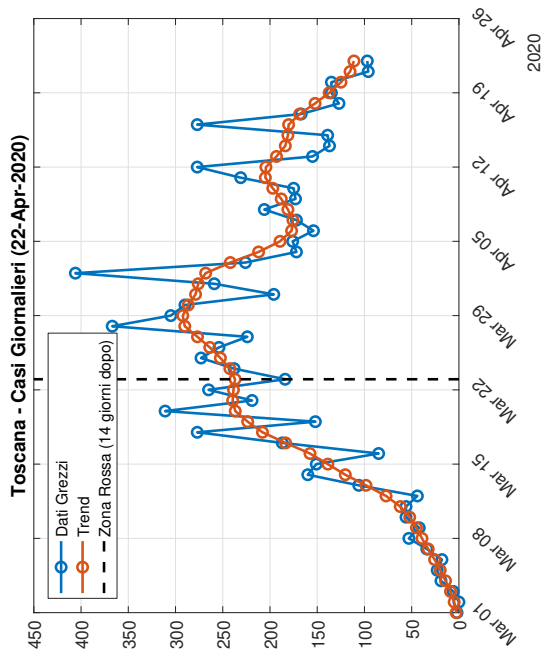
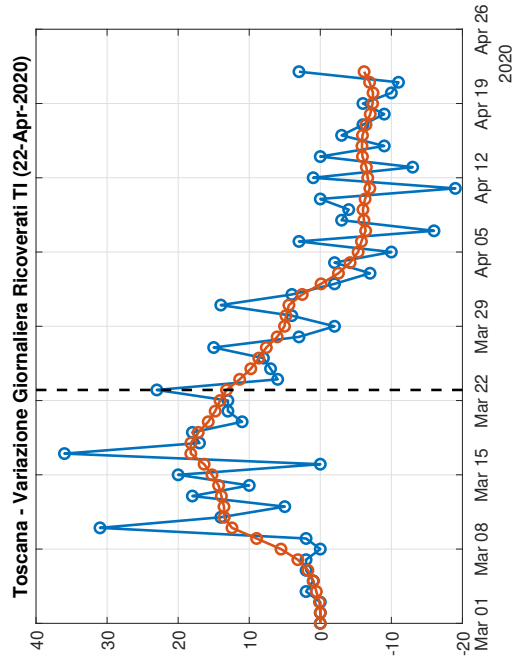
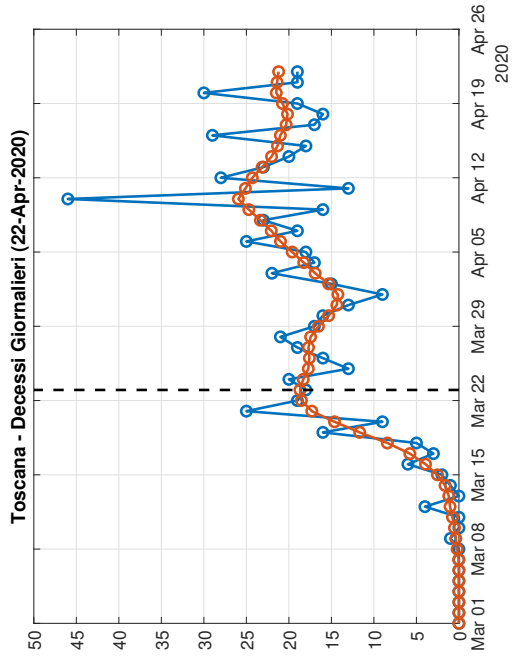


## 1.6 Liguria

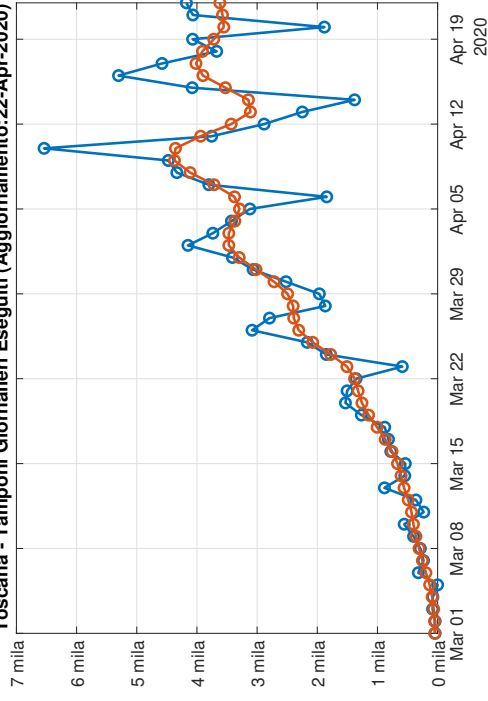




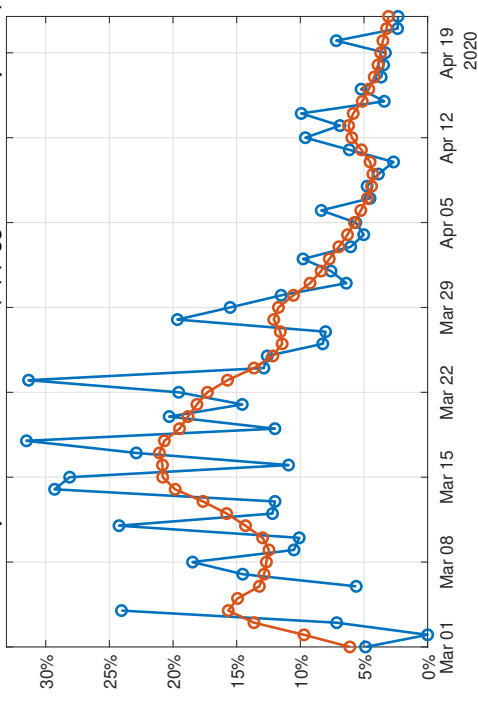
# 1.7 Toscana



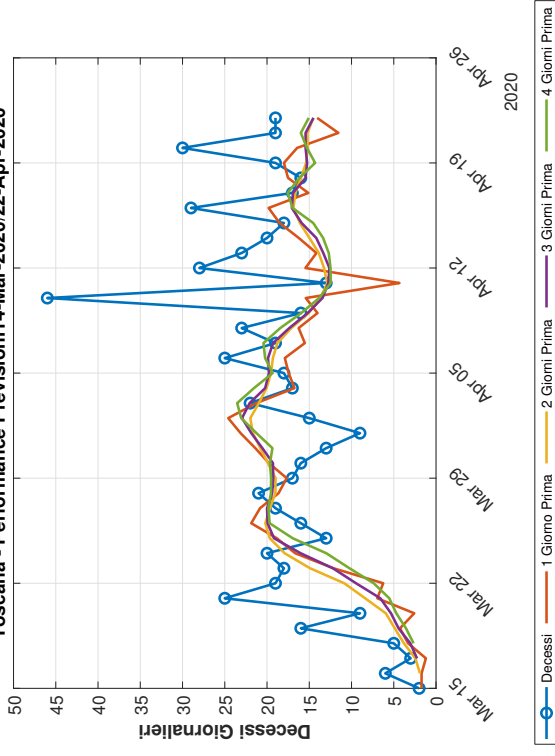
Toscana - Tamponi Giornalieri Eseguiti (Aggiornamento:22-Apr-2020)



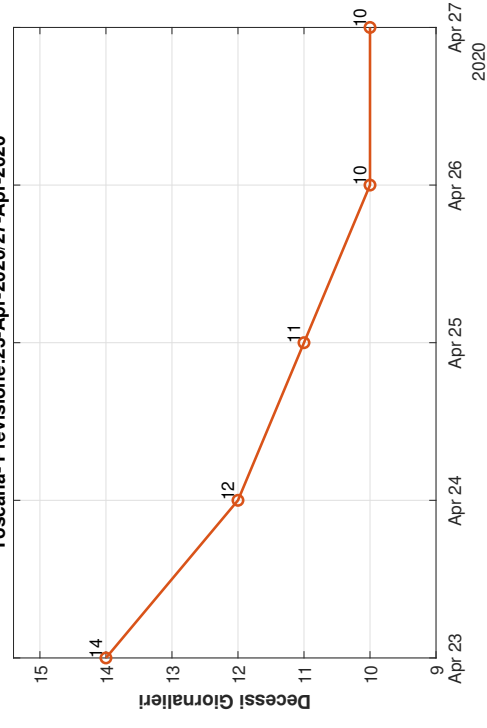
Toscana - Tamponi Giornalieri Positivi (%) (Aggiornamento:22-Apr-2020)



Toscana - Performance Previsioni 4-Mar-2020/22-Apr-2020

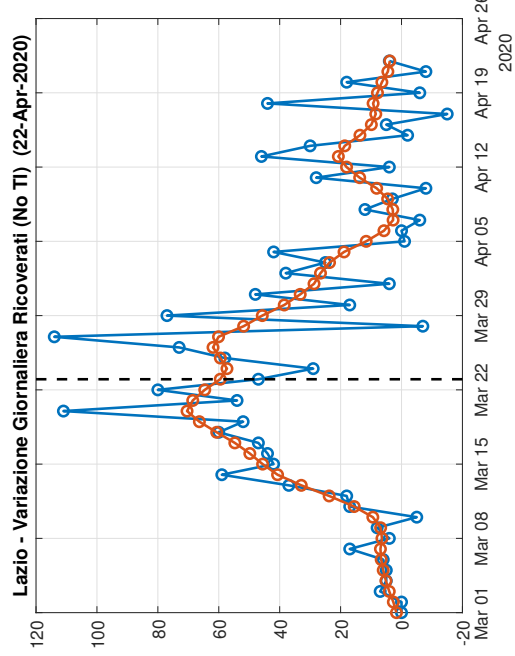
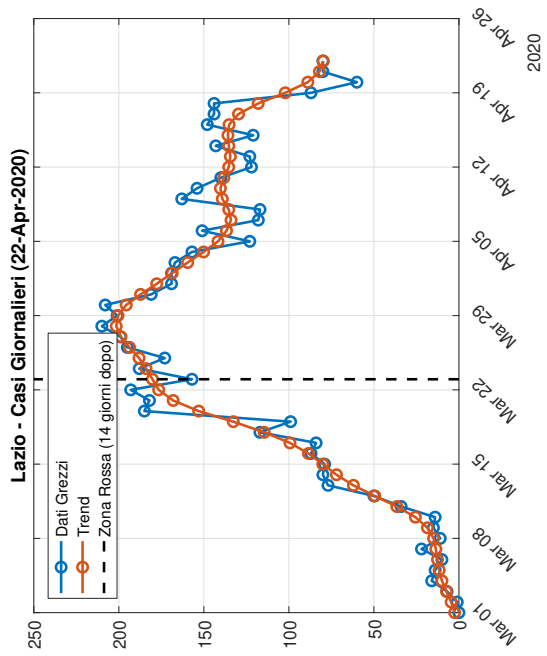
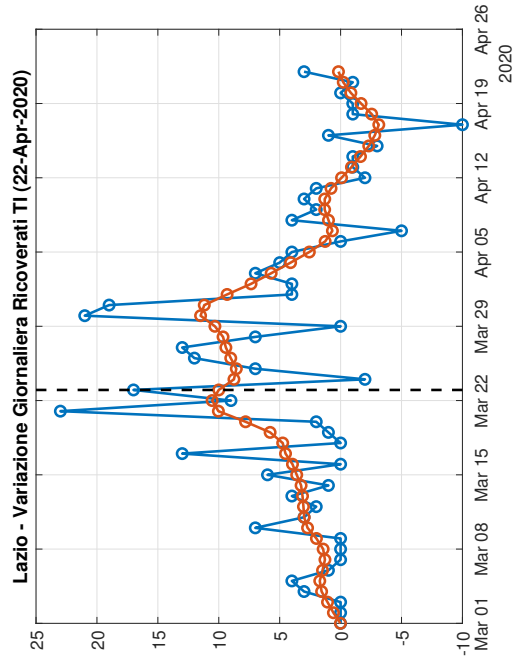
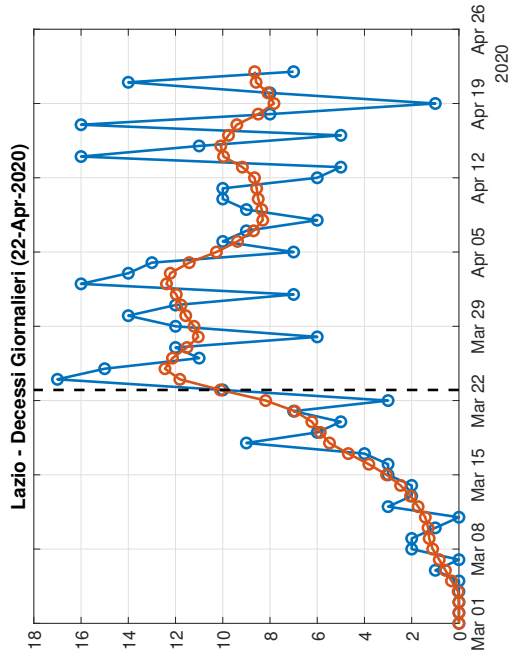


Toscana - Previsione:23-Apr-2020/27-Apr-2020

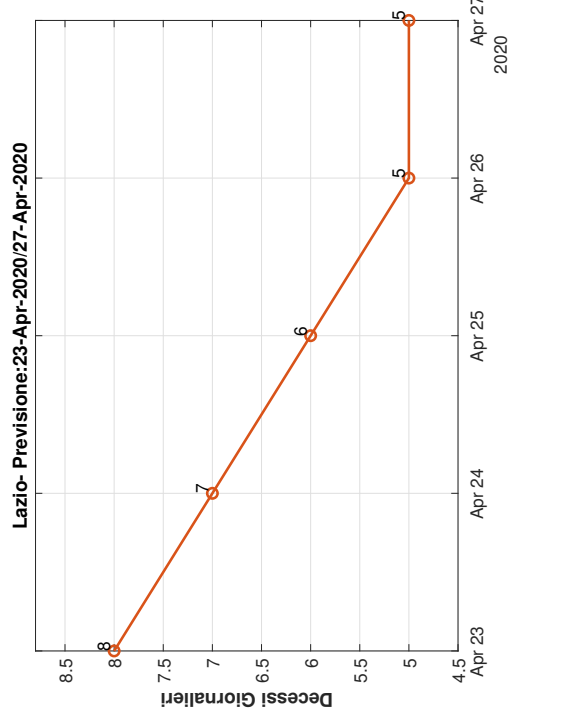
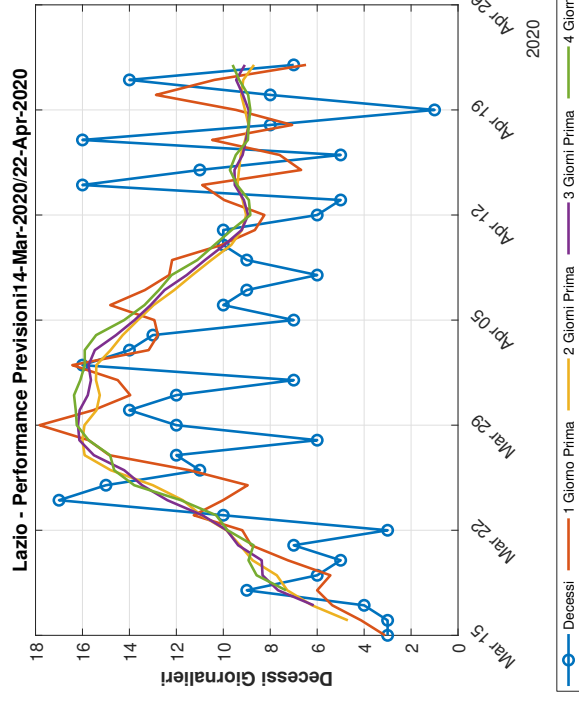
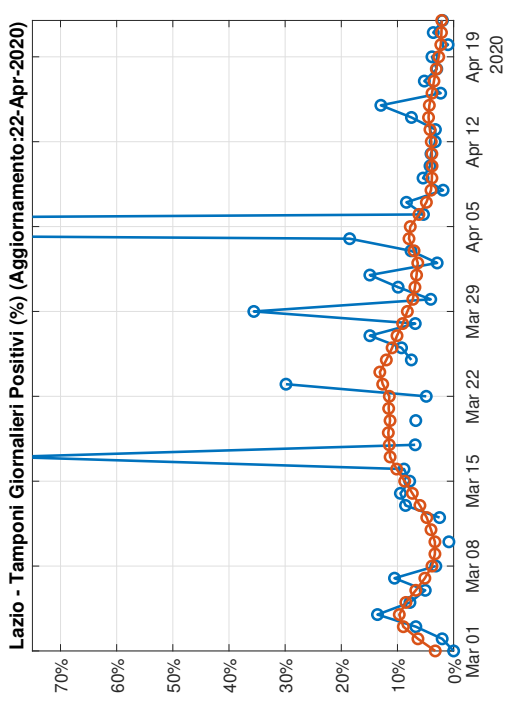
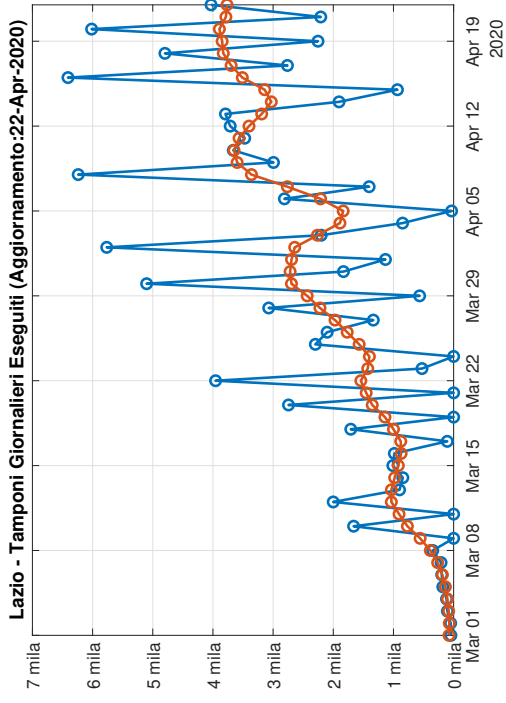


Decessi  
1 Giorno Prima  
2 Giorni Prima  
3 Giorni Prima  
4 Giorni Prima

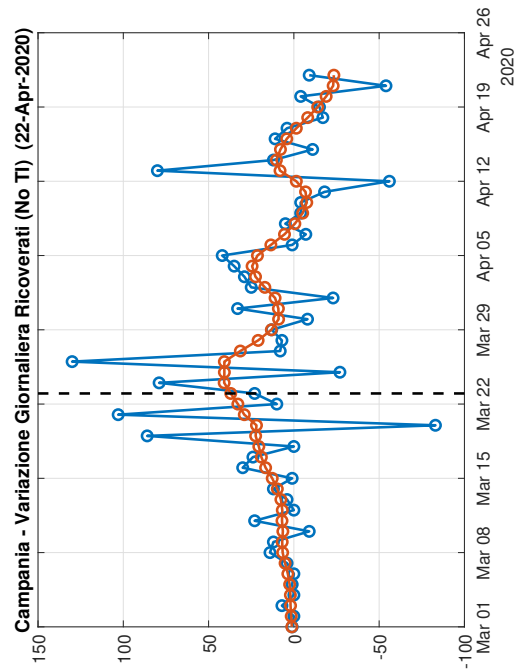
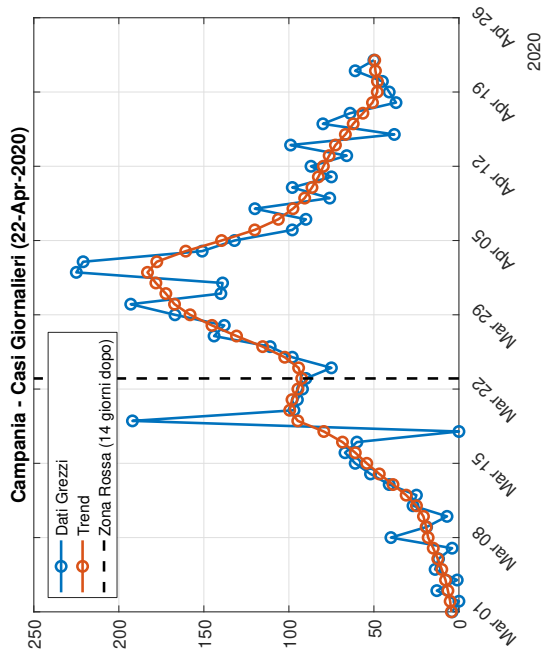
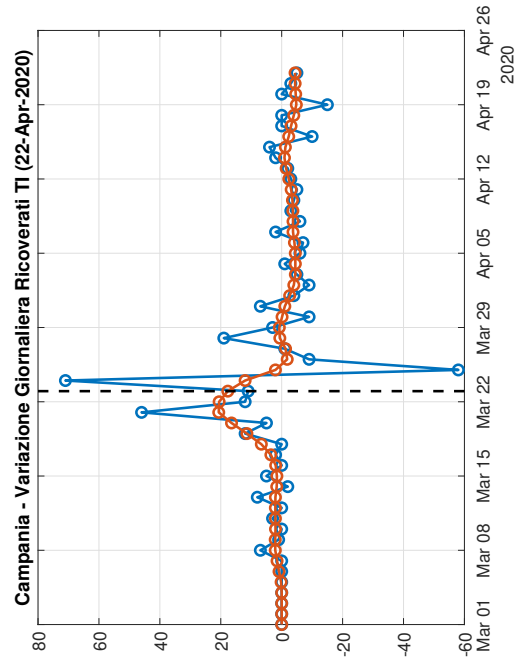
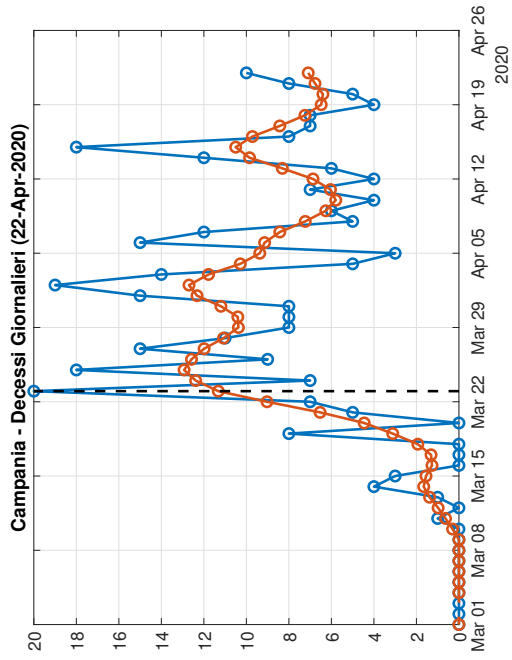
# 1.8 Lazio

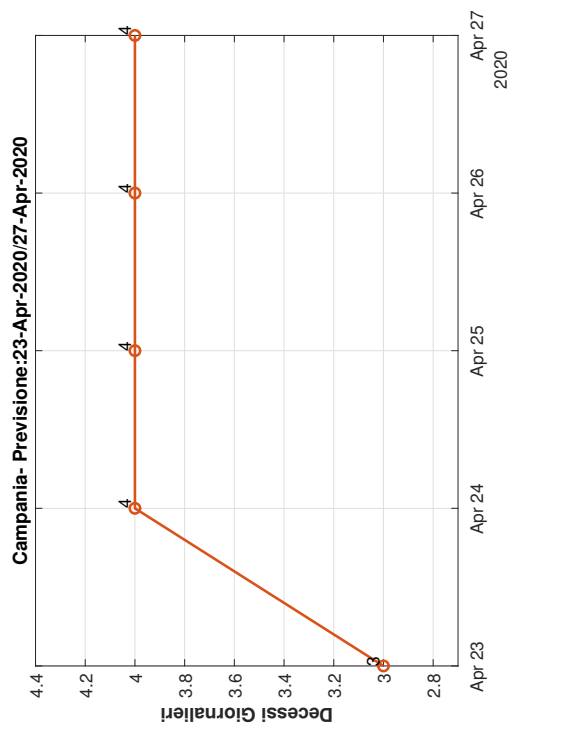
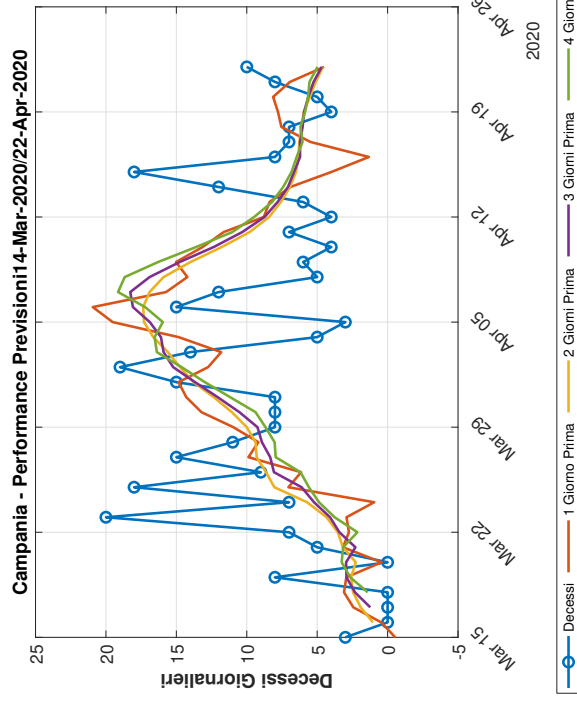
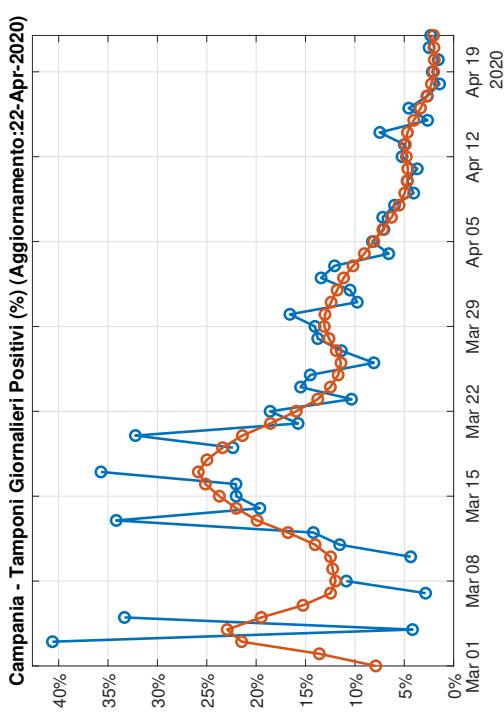
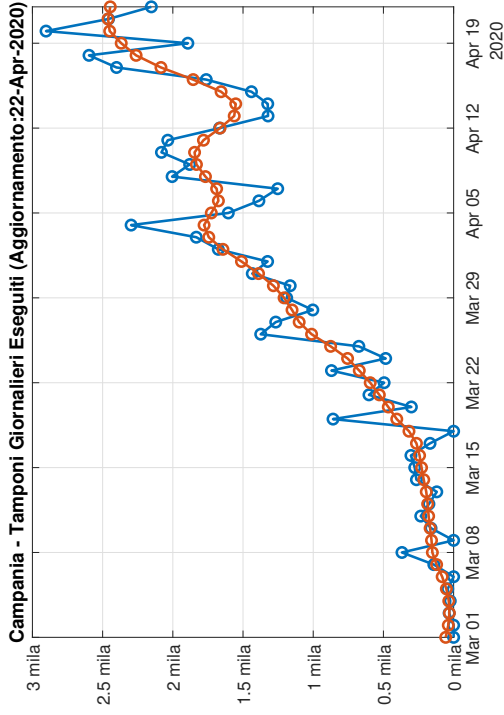




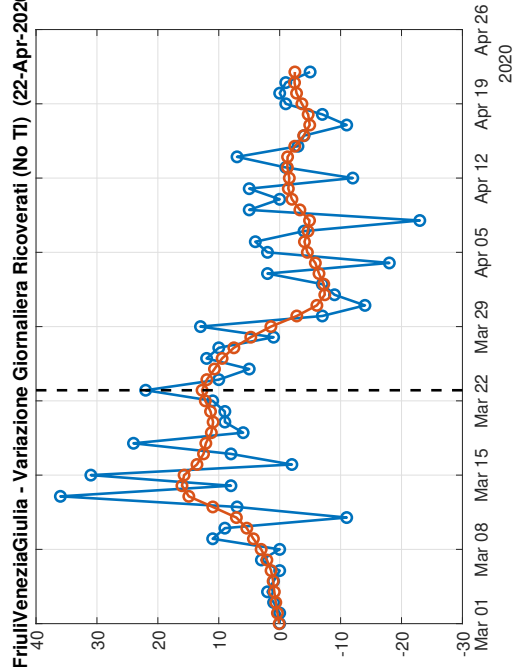
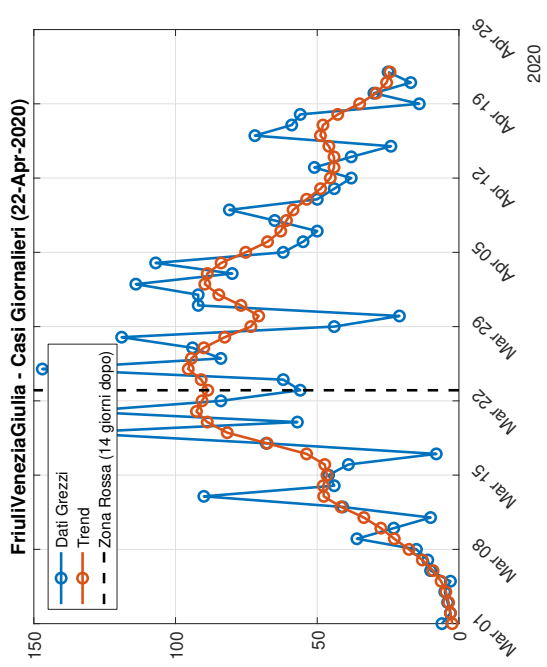
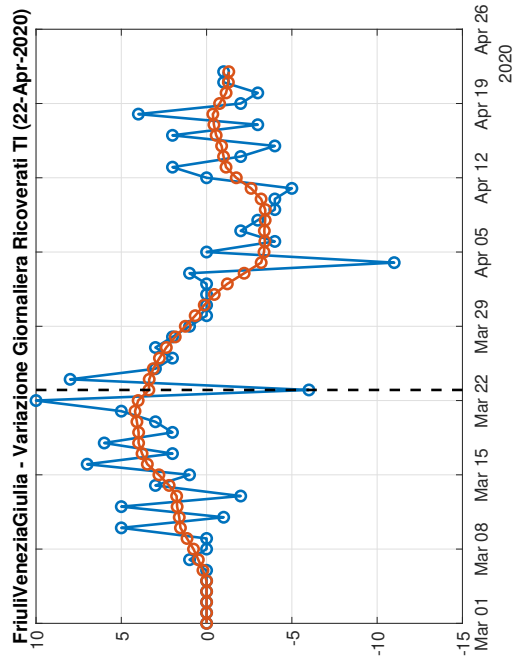
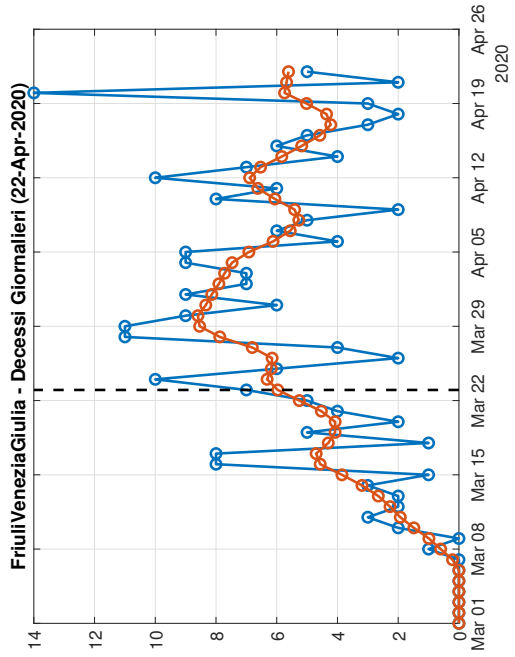


# 1.9 Campania

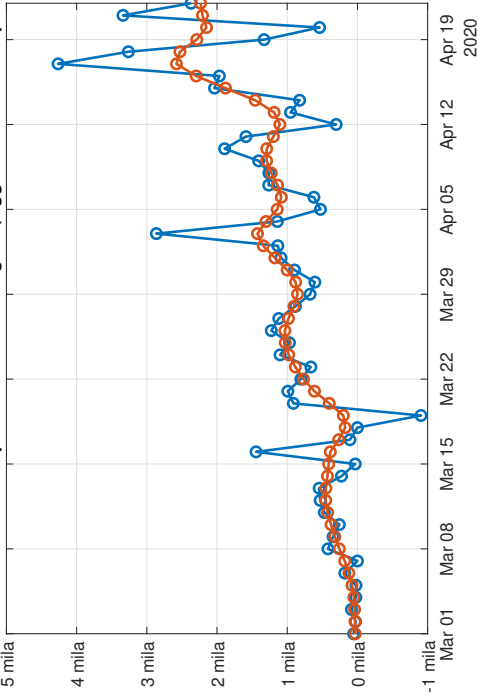




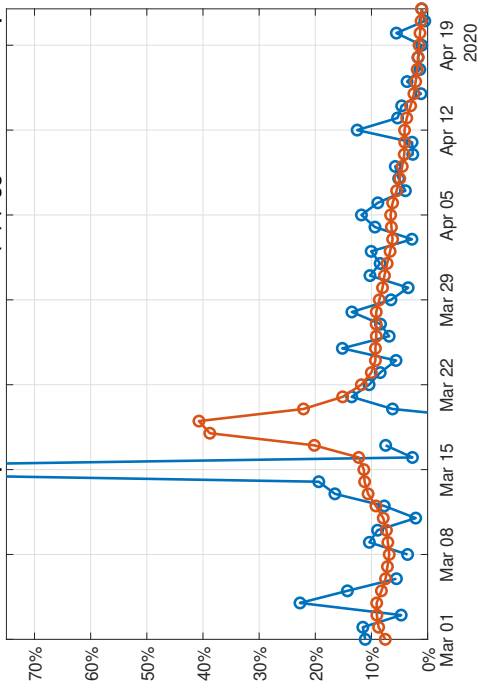
# 1.10 Friuli Venezia Giulia



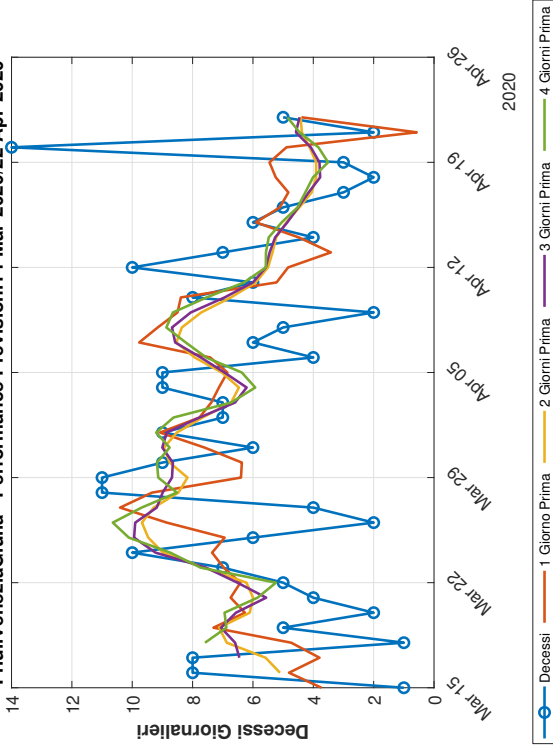
FriuliVeneziaGiulia - Tamponi Giornalieri Eseguiti (Aggiornamento:22-Apr-2020)



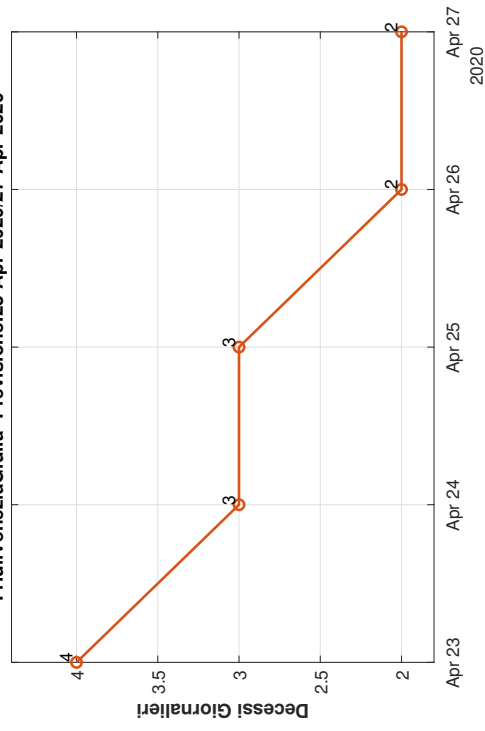
FriuliVeneziaGiulia - Tamponi Giornalieri Positivi (%) (Aggiornamento:22-Apr-2020)



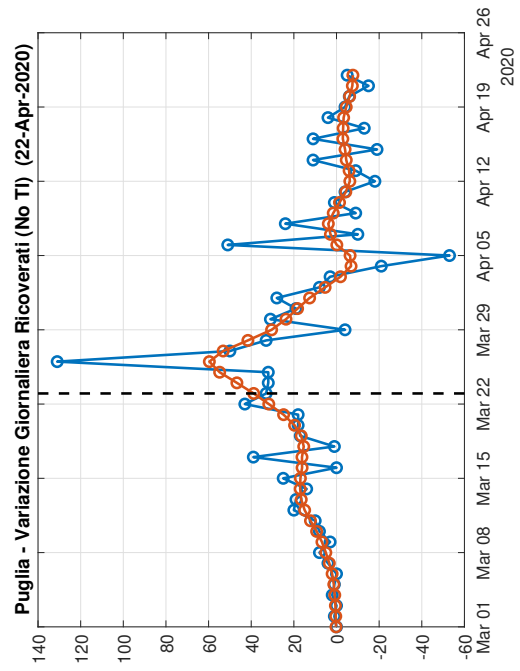
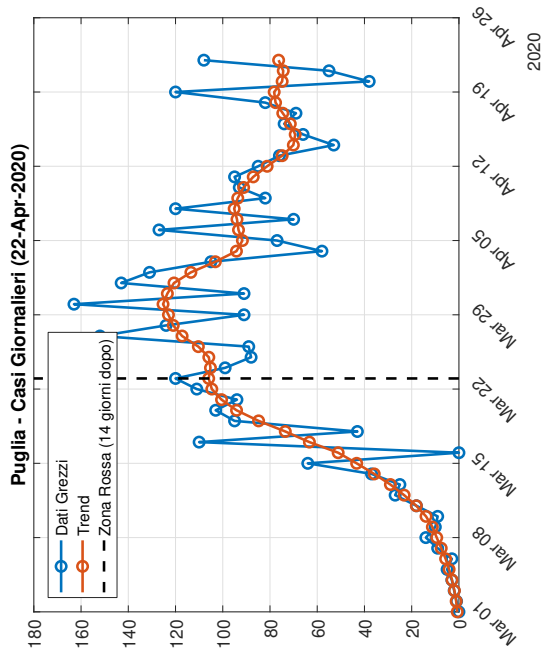
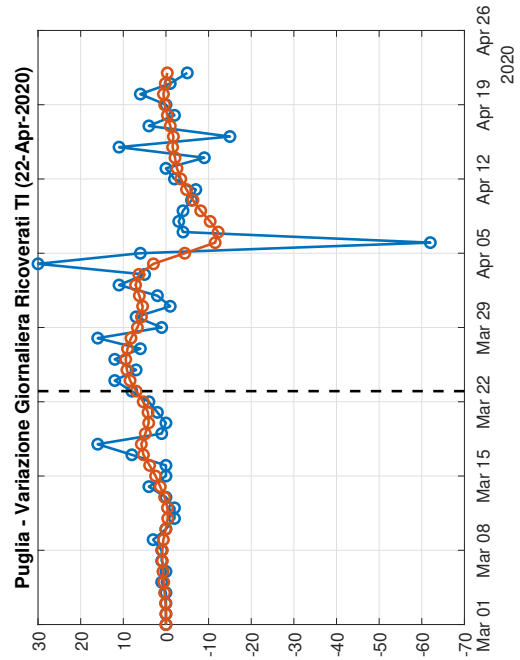
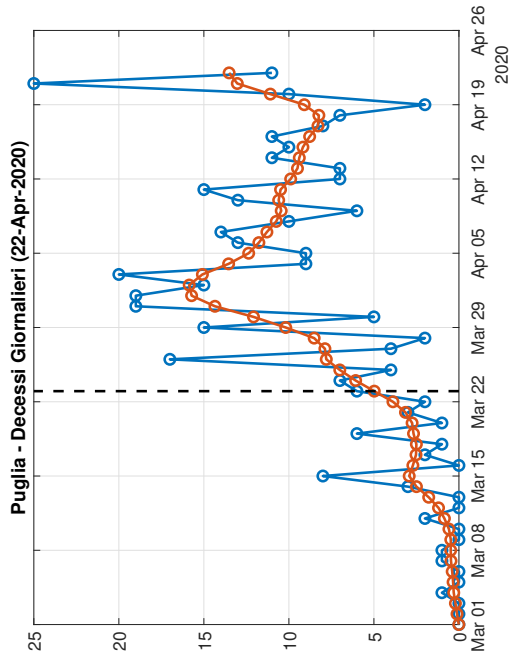
FriuliVeneziaGiulia - Performance Previsioni 14-Mar-2020/22-Apr-2020

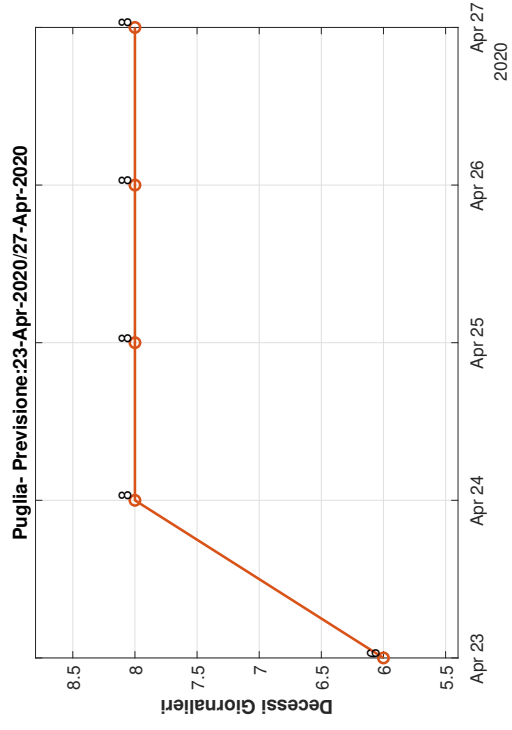
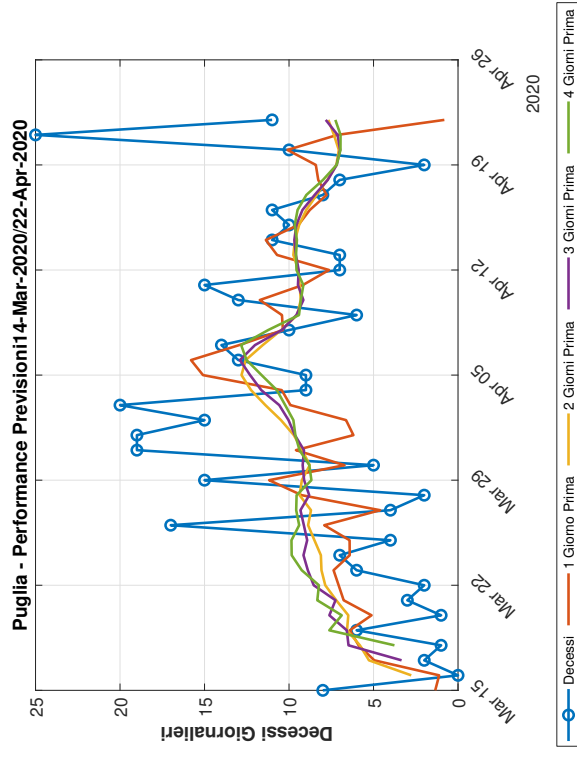
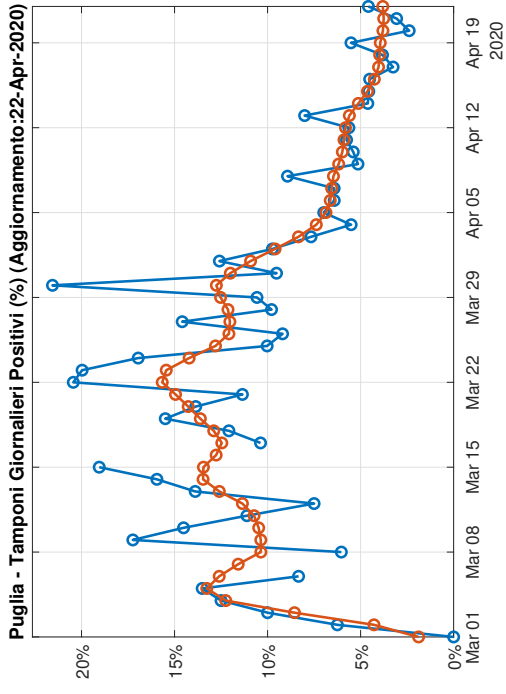
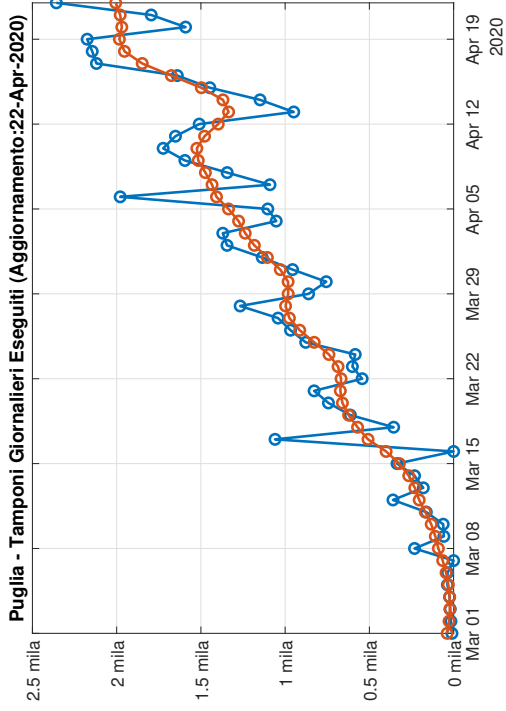


FriuliVeneziaGiulia- Previsione:23-Apr-2020/27-Apr-2020

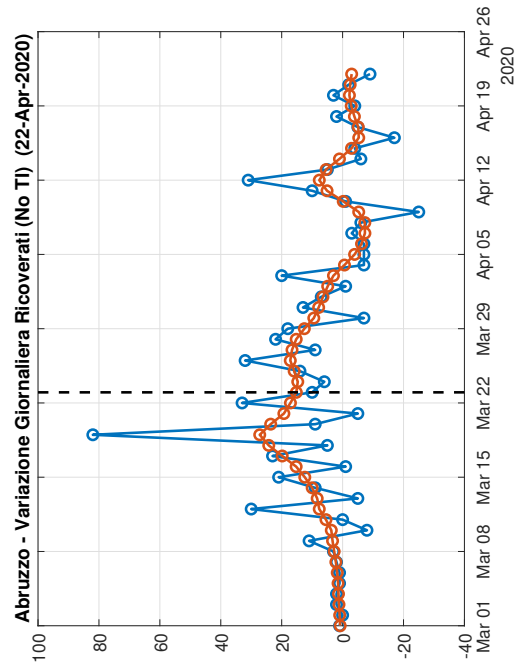
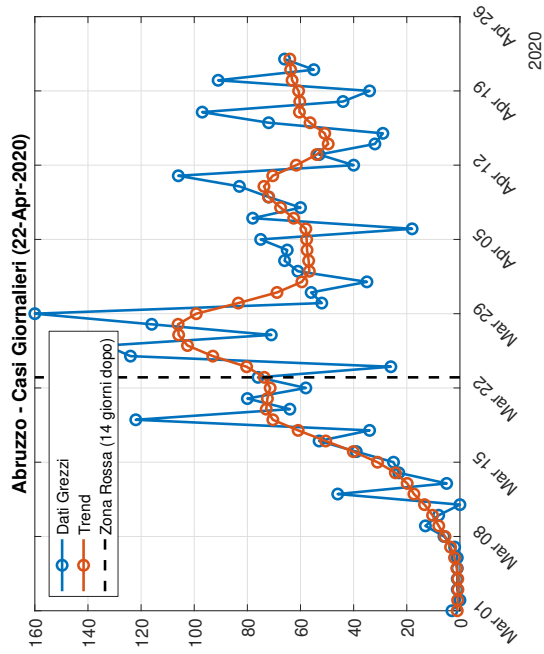
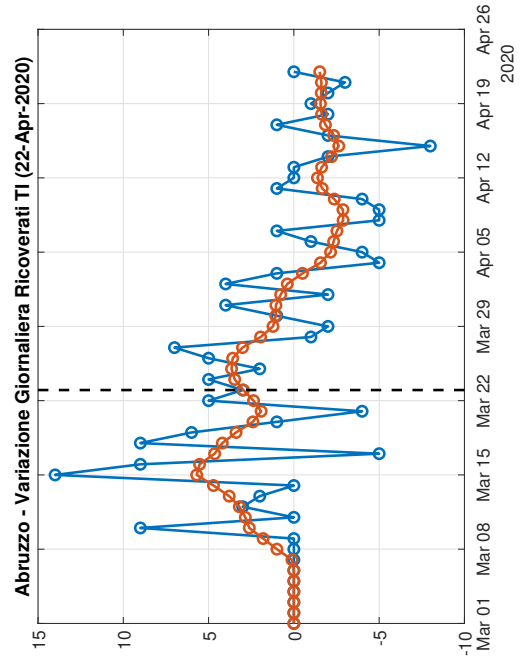
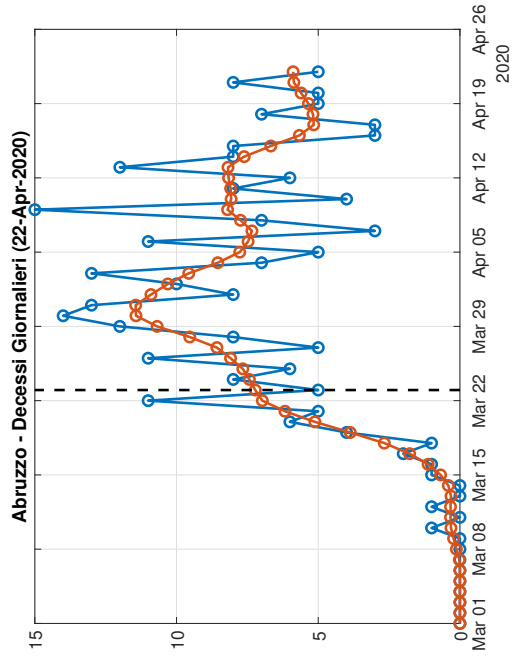


## 1.11 Puglia

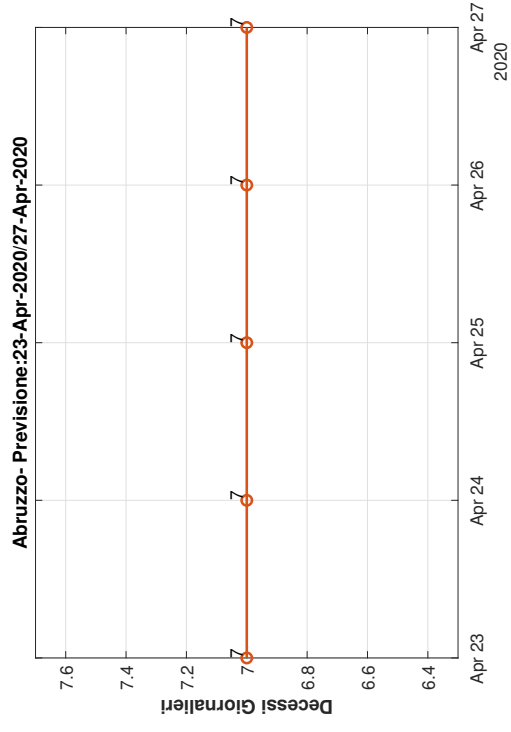
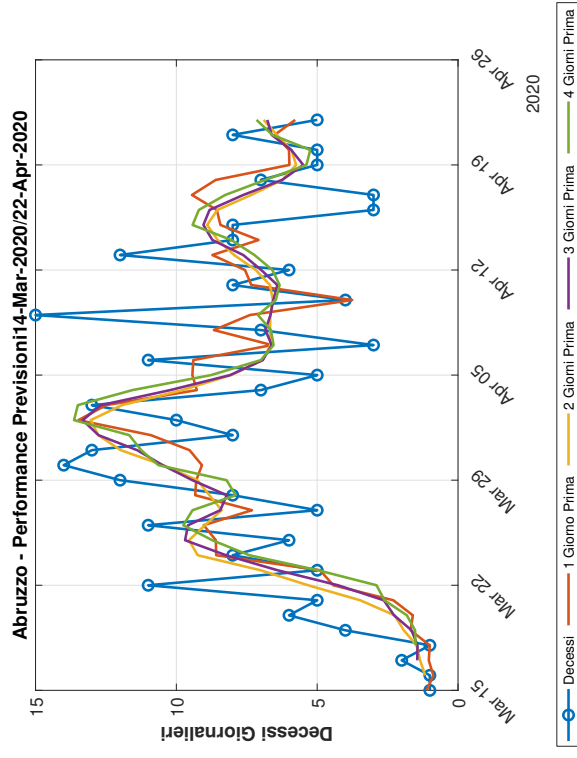
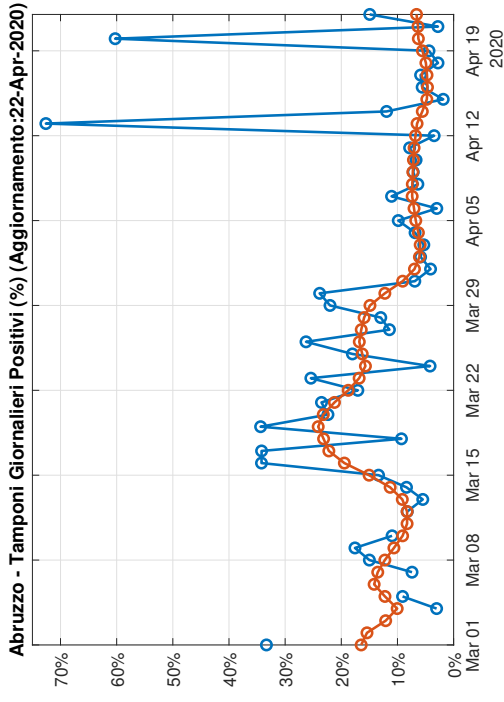
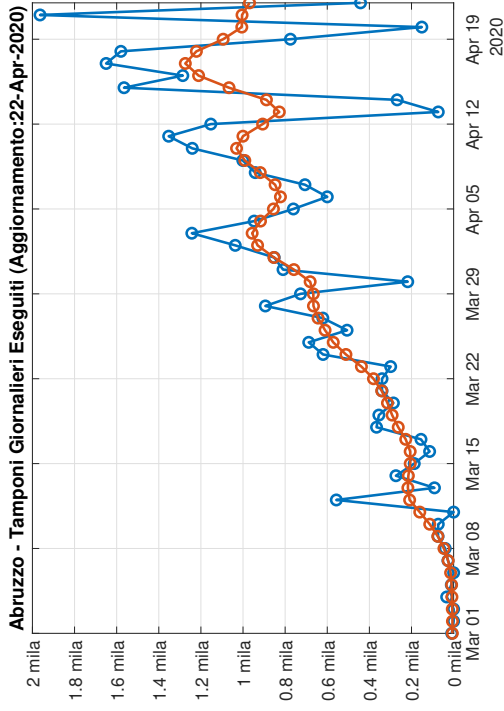




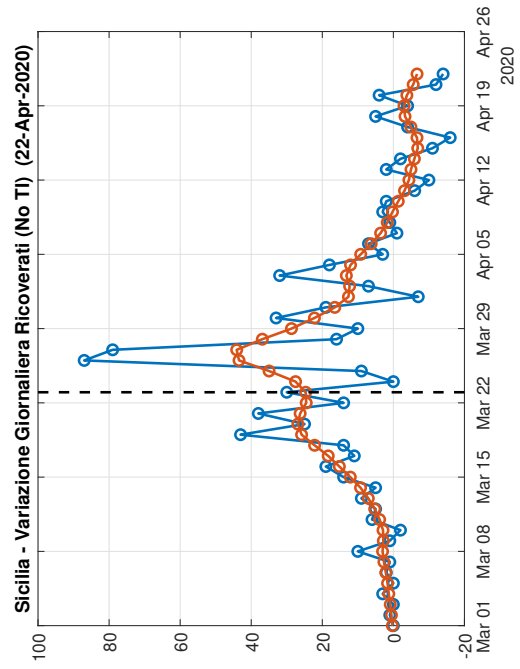
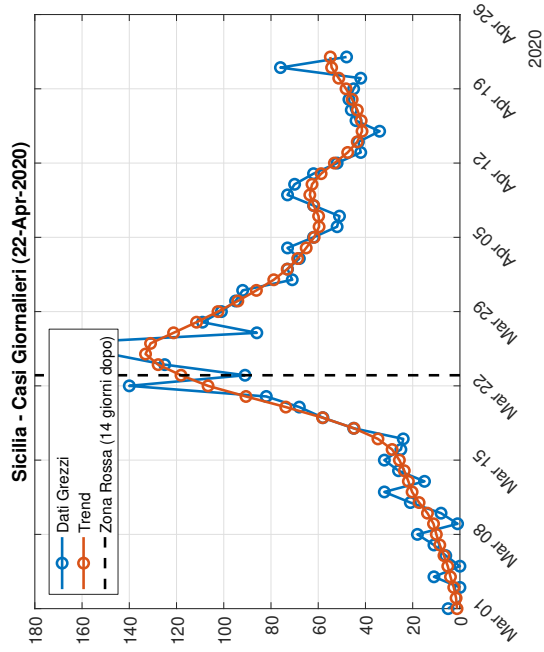
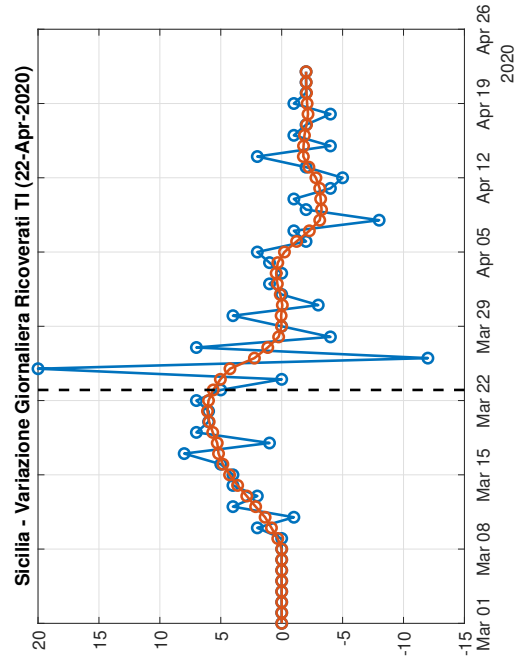
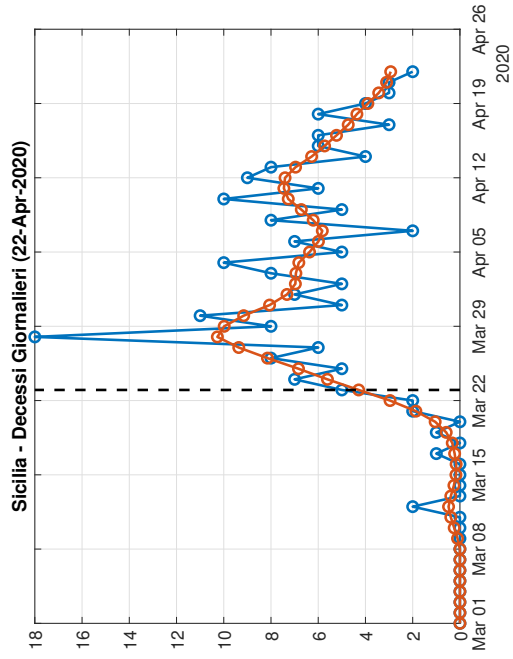
## 1.12 Abruzzo

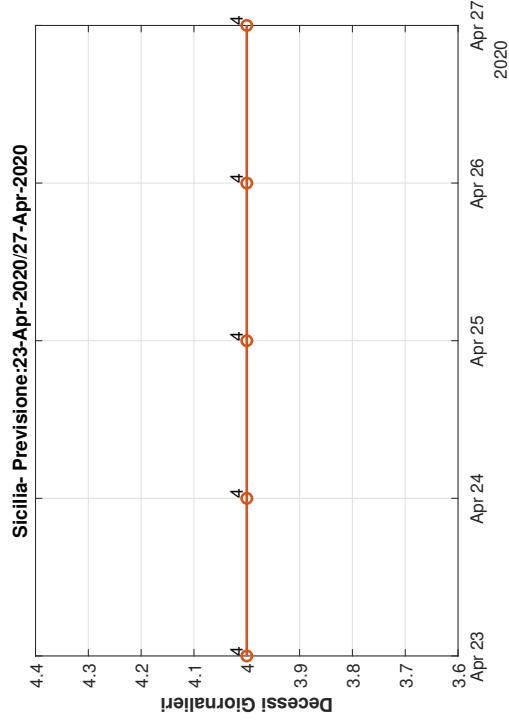
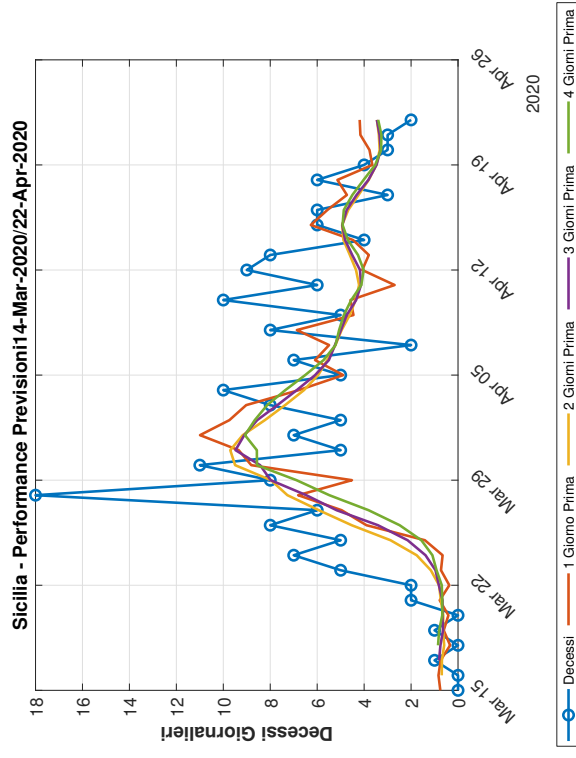
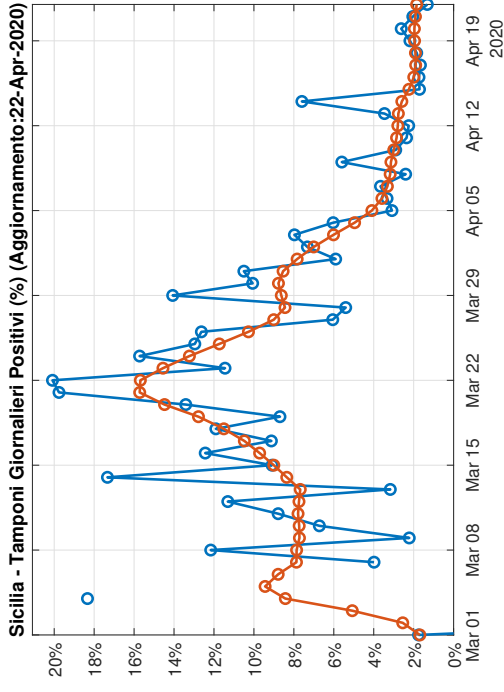
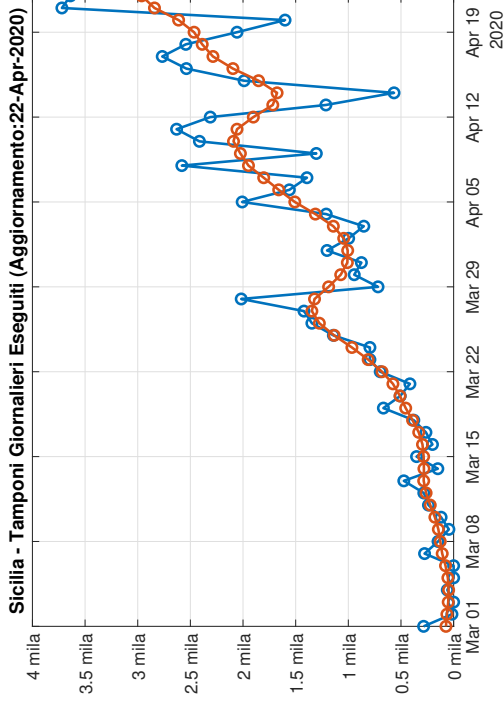




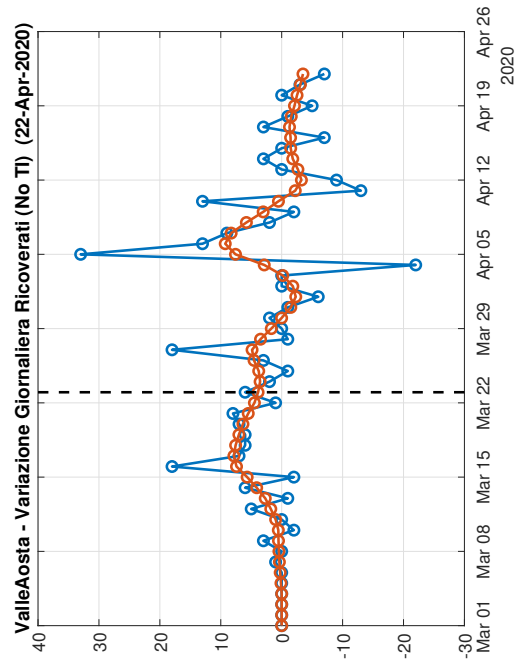
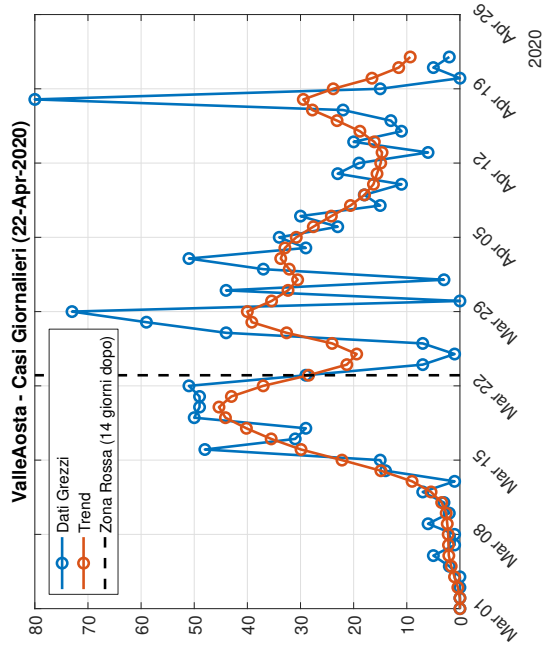
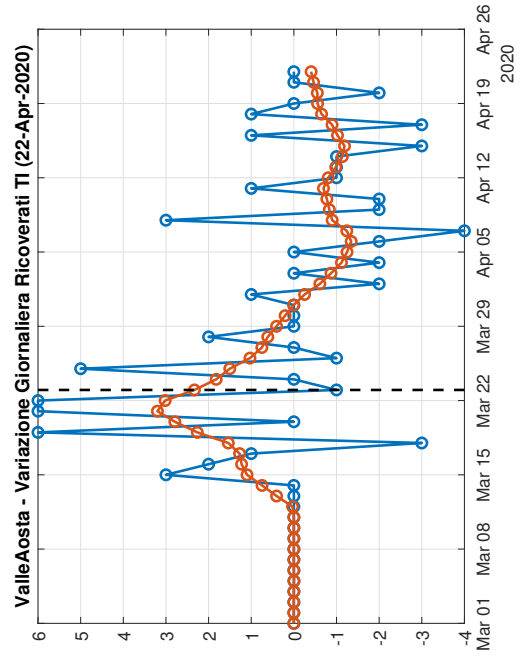
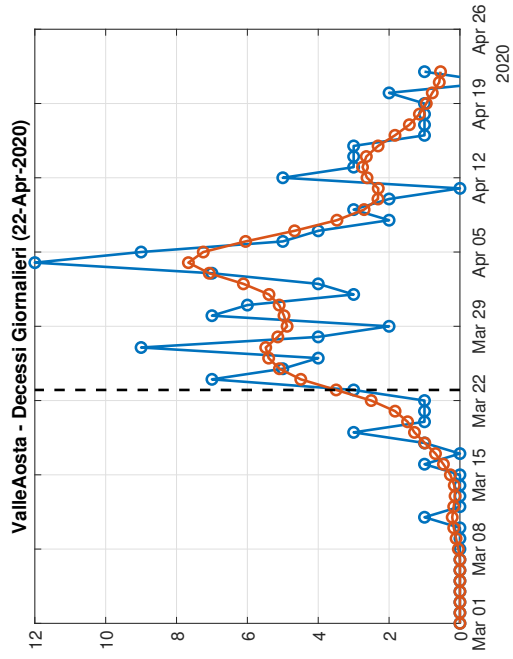


# 1.13 Sicilia

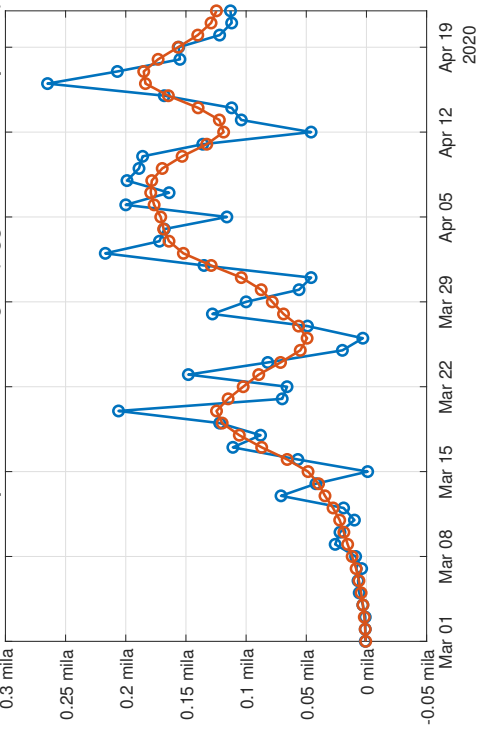




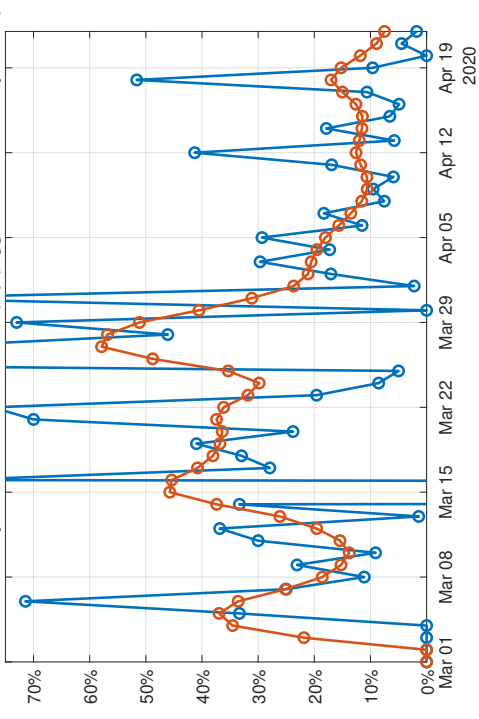
# 1.14 Valle d'Aosta



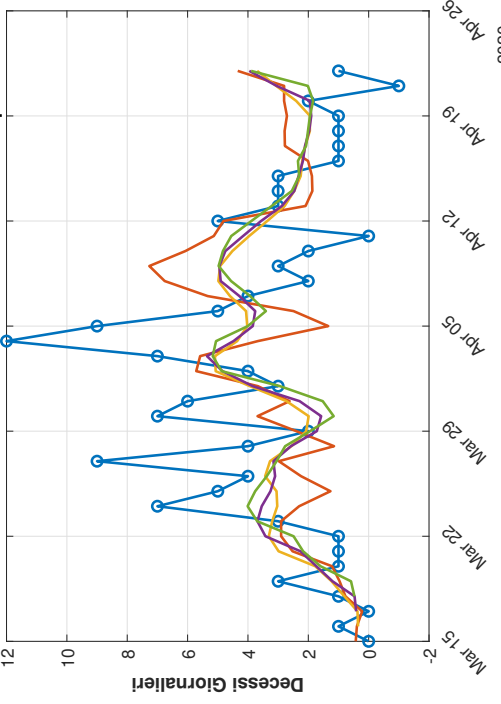
ValleAosta - Tamponi Giornalieri Eseguiti (Aggiornamento:22-Apr-2020)



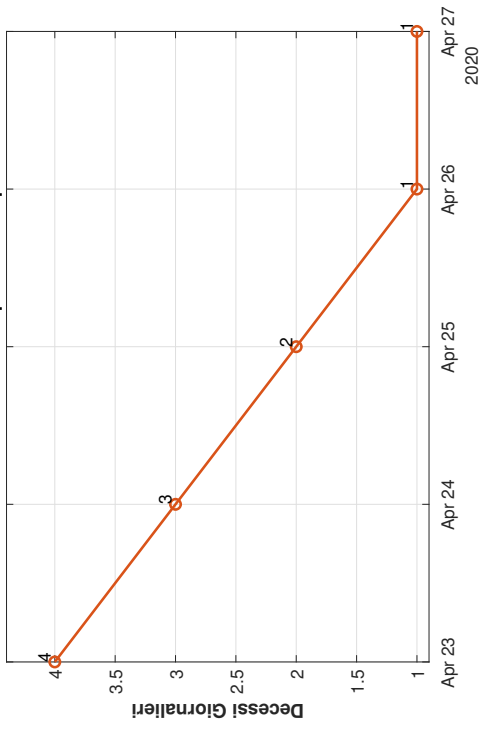
ValleAosta - Tamponi Giornalieri Positivi (%) (Aggiornamento:22-Apr-2020)



ValleAosta - Performance Previsioni 1-4-Mar-2020/22-Apr-2020

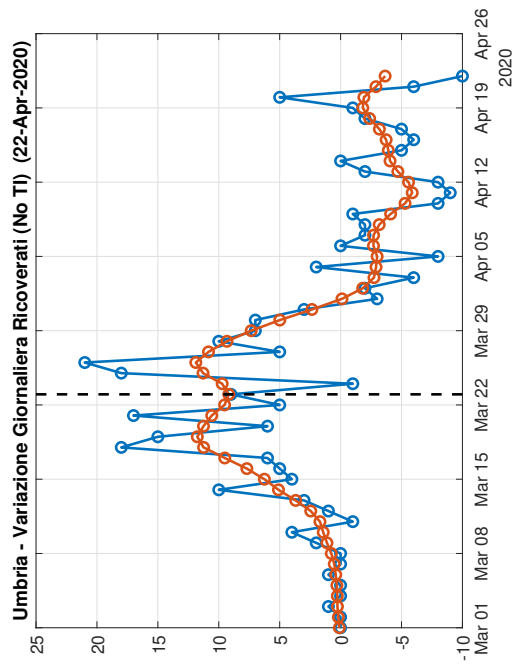
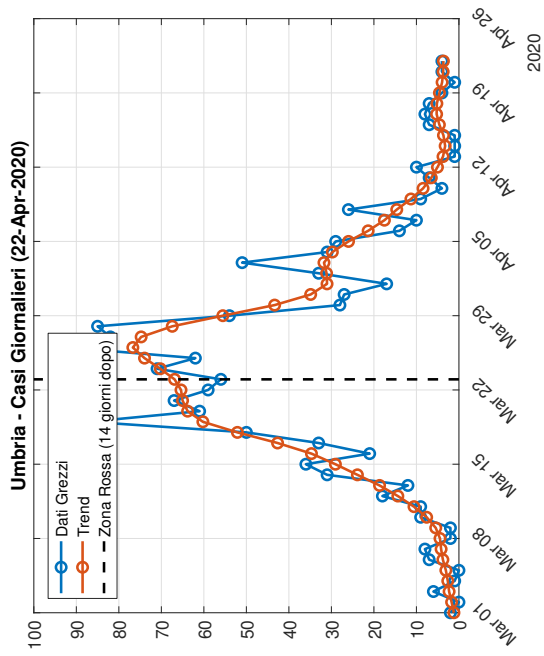
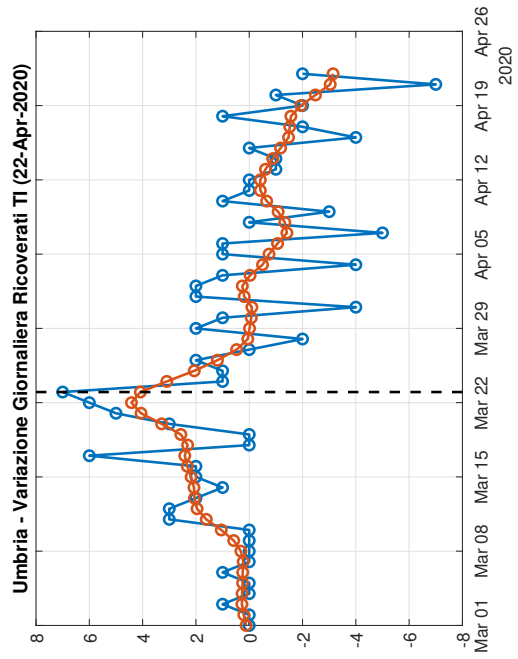
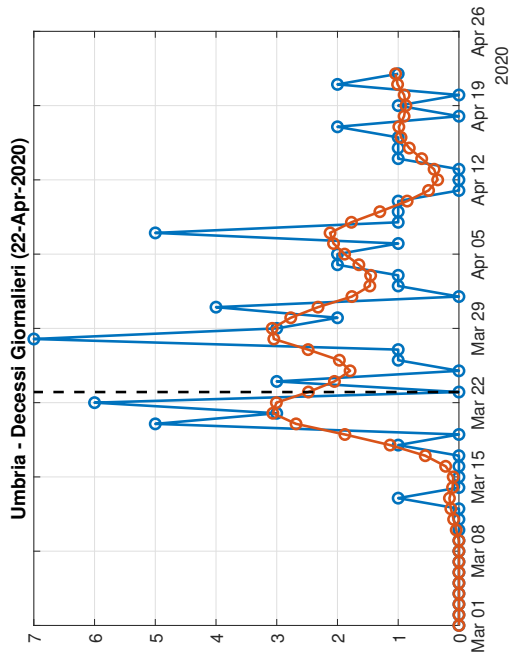


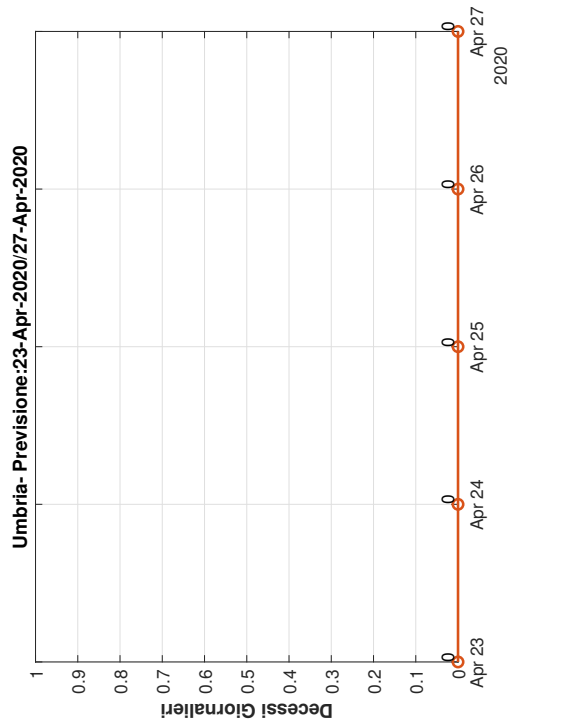
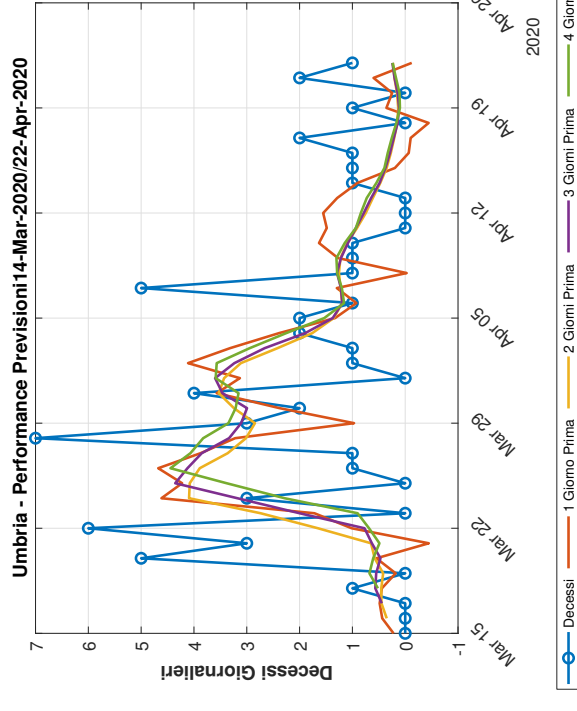
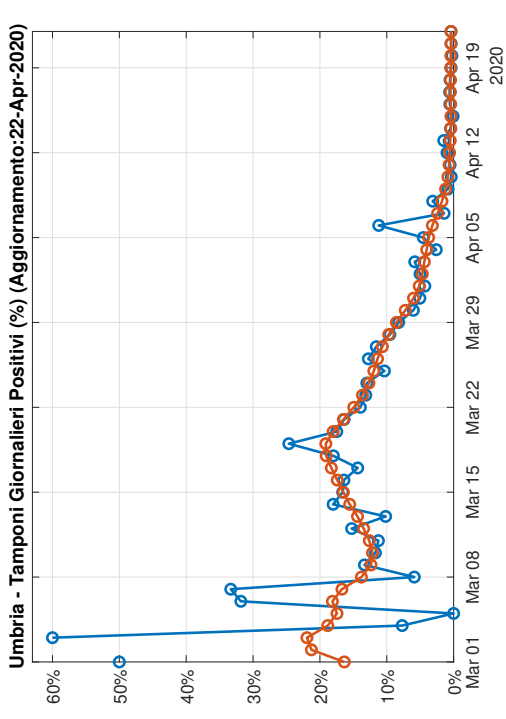
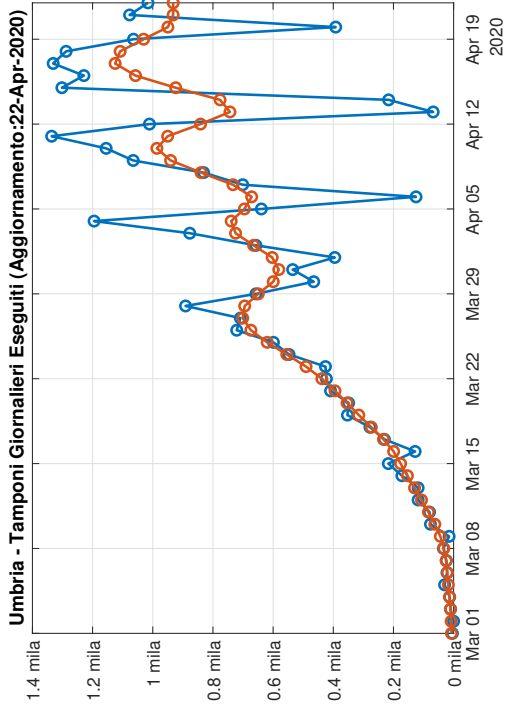
ValleAosta- Previsione:23-Apr-2020/27-Apr-2020



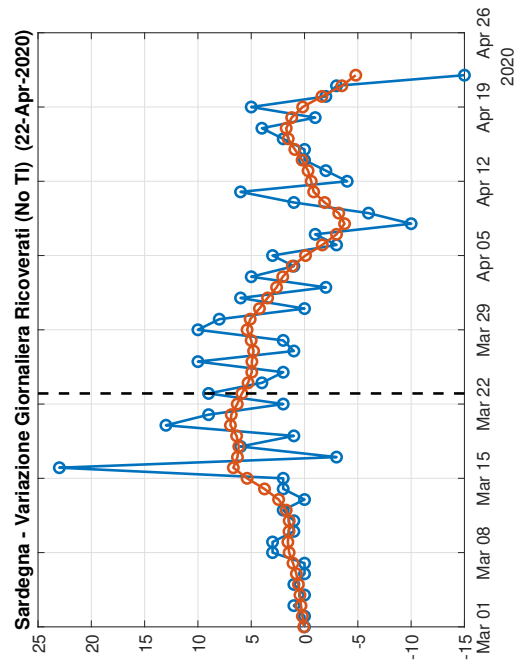
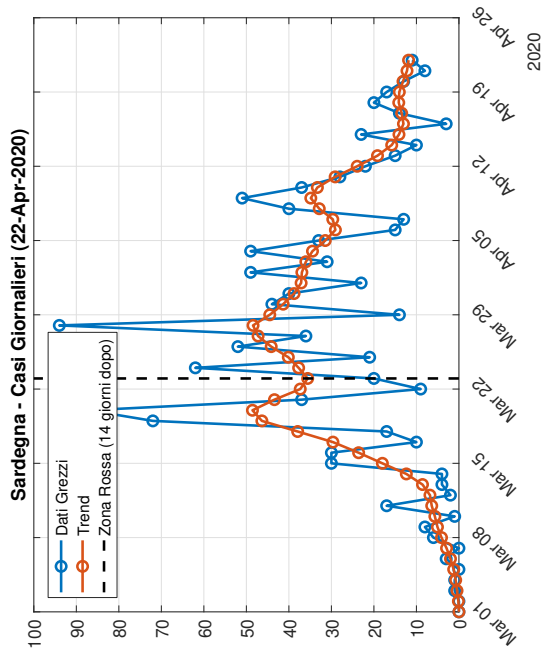
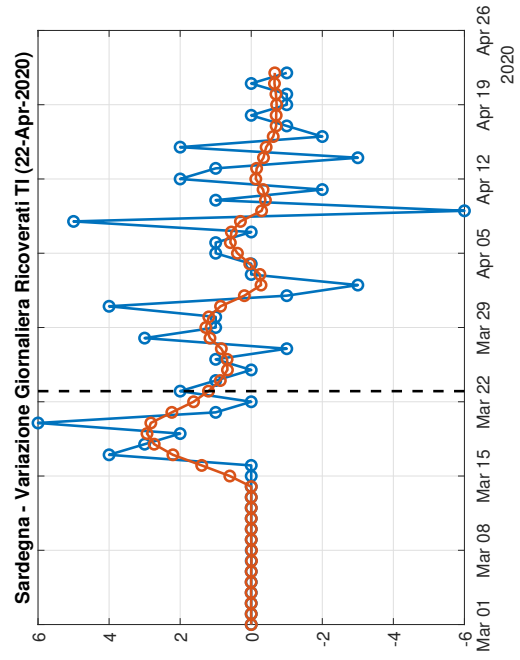
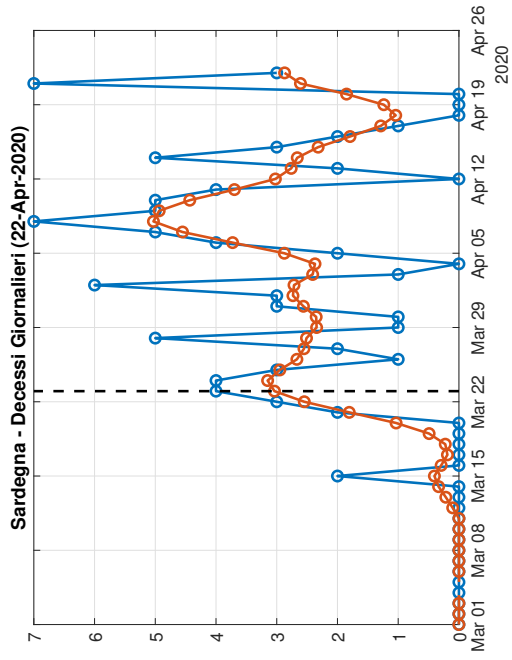
Legend for ValleAosta - Performance Previsioni: Decessi (blue circle), 1 Giorno Prima (orange line), 2 Giorni Prima (yellow line), 3 Giorni Prima (purple line), 4 Giorni Prima (green line)

# 1.15 Umbria

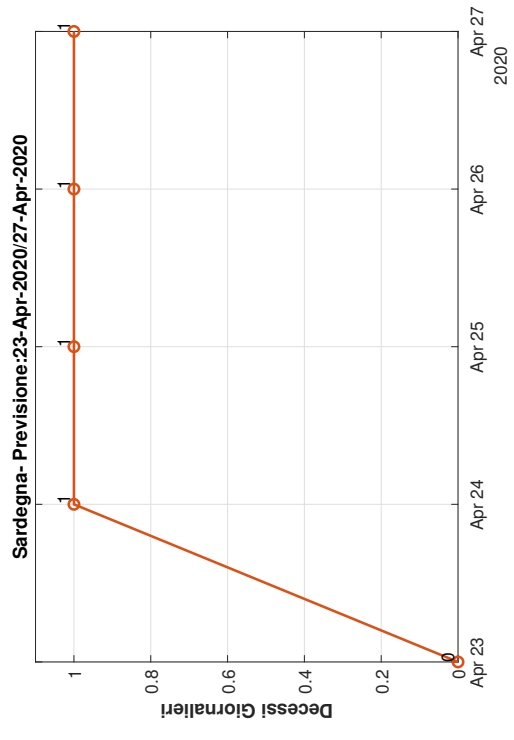
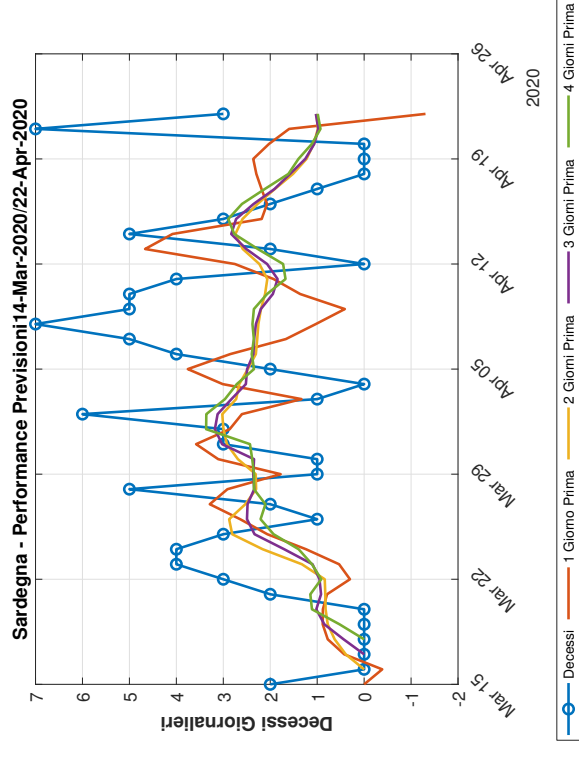
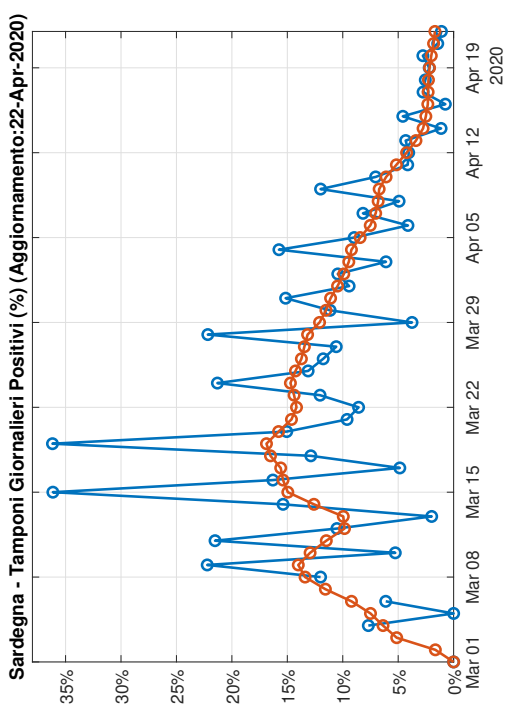
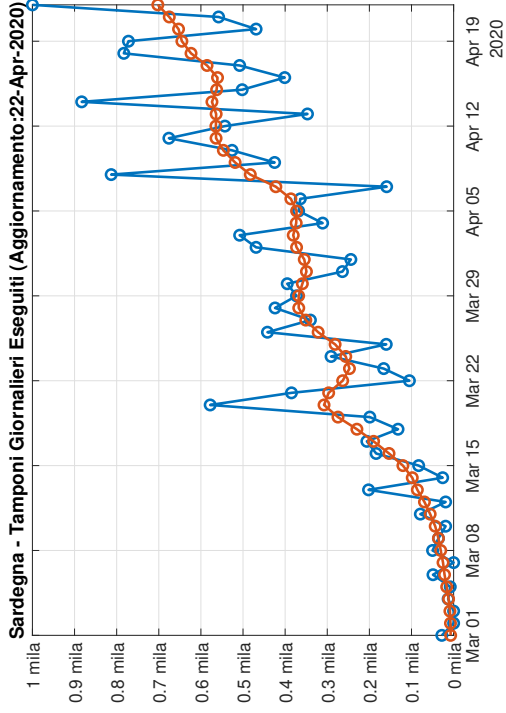




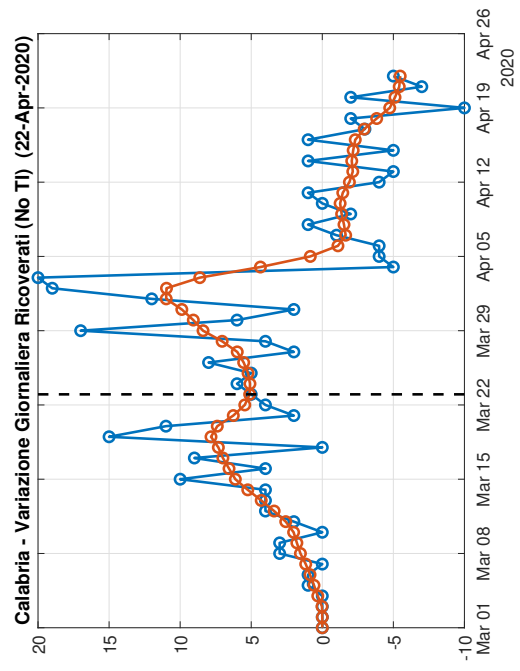
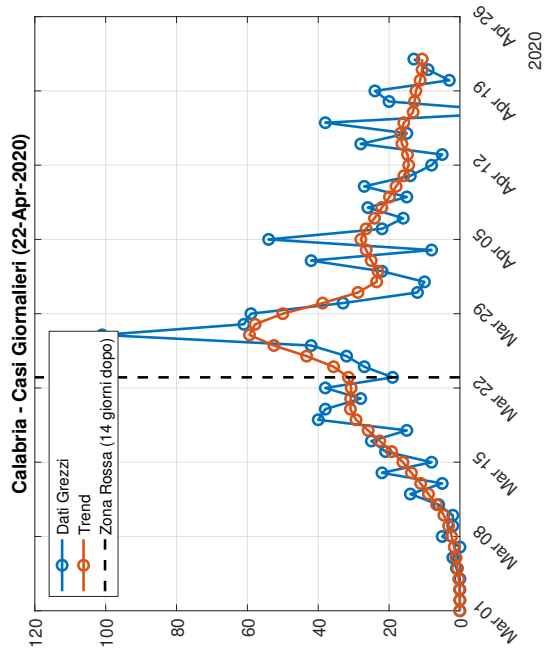
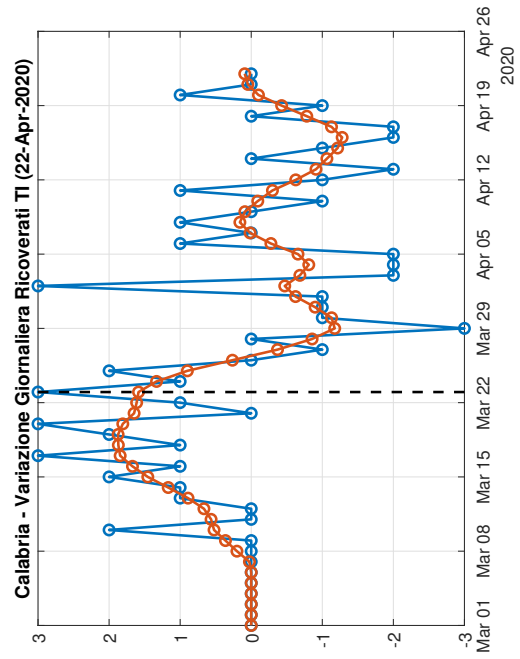
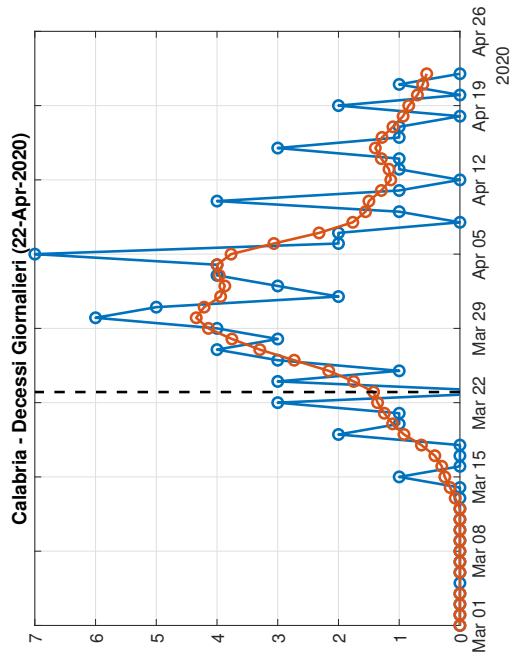
# 1.16 Sardegna

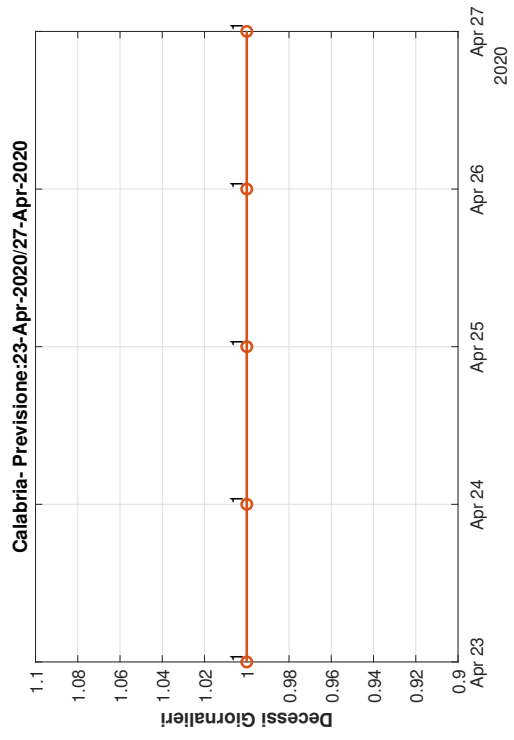
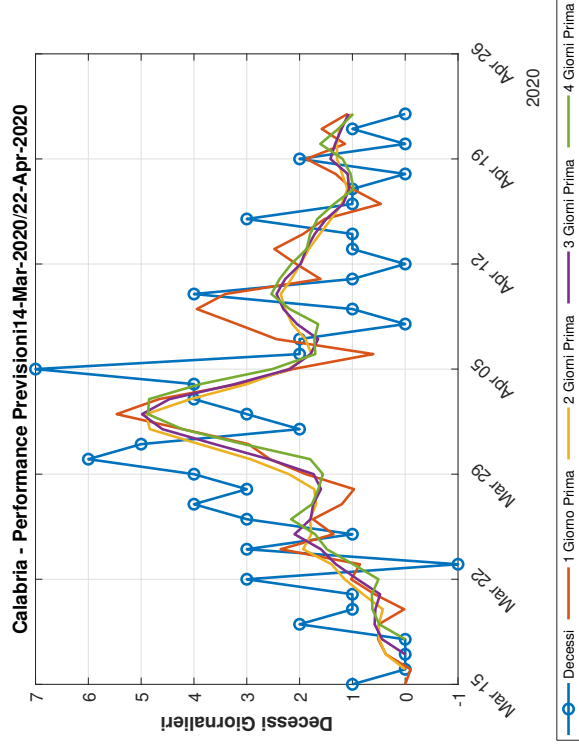
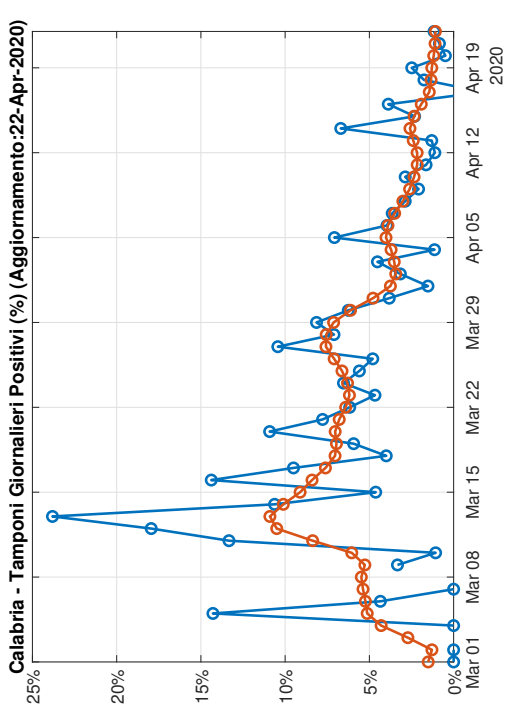
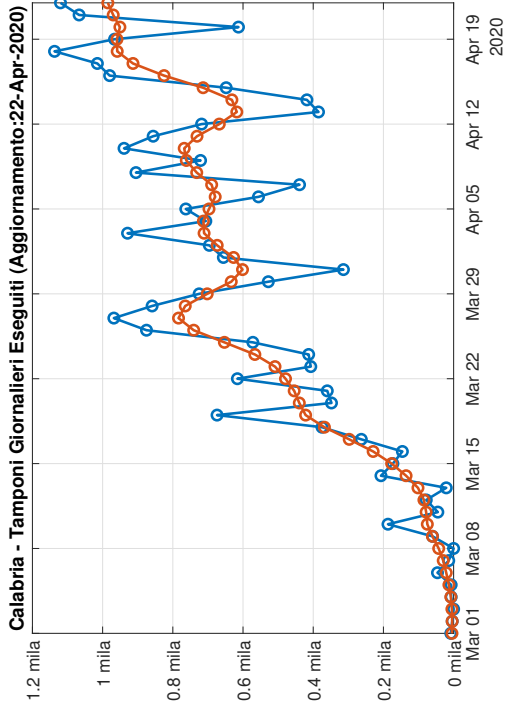




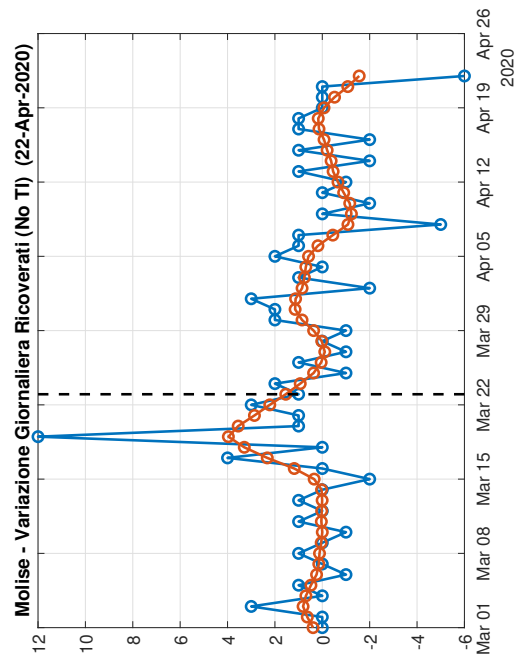
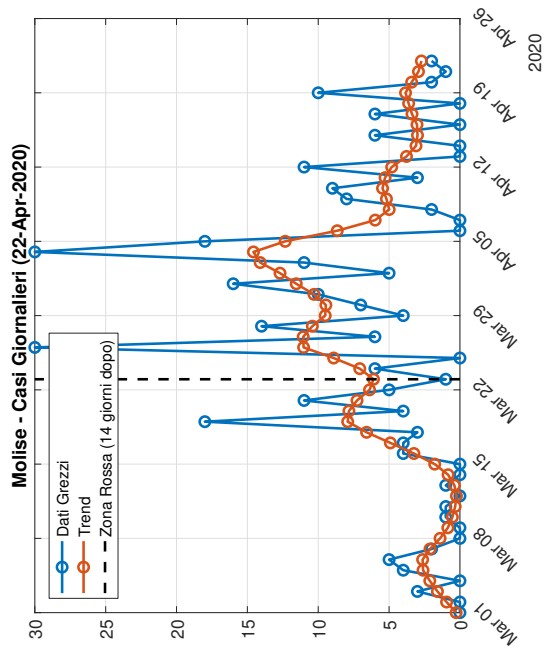
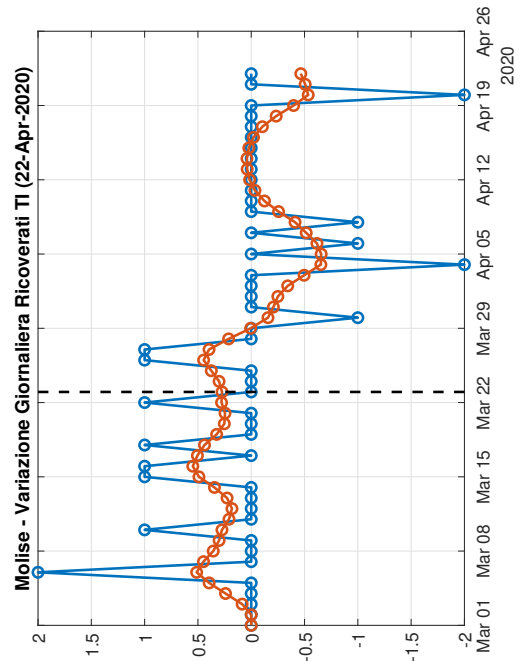
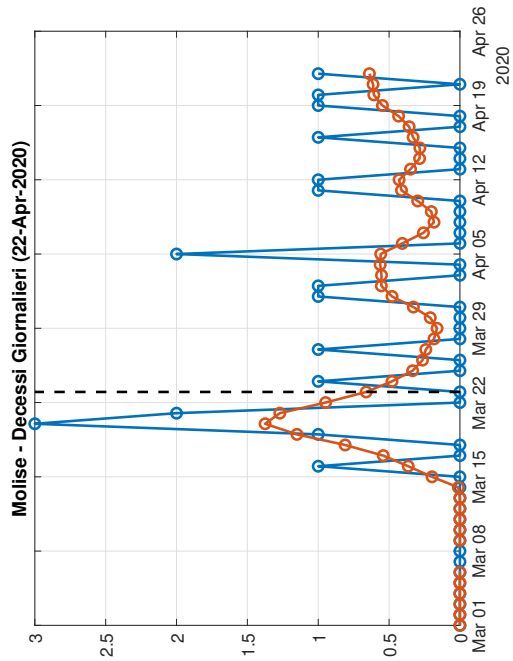


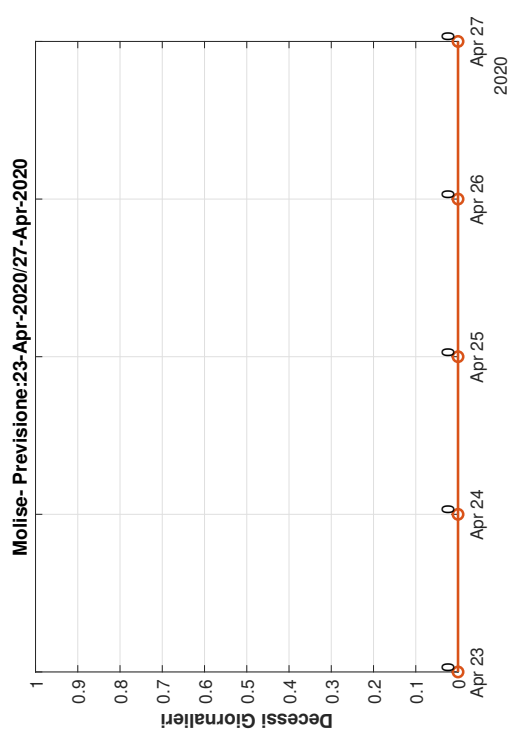
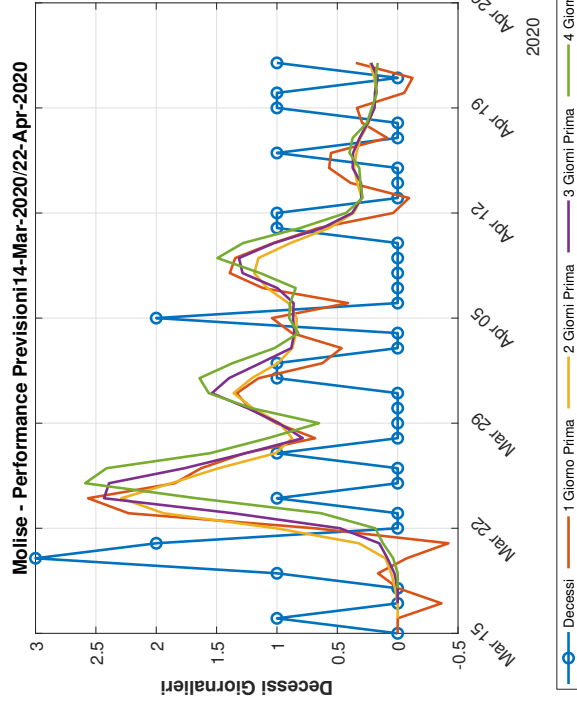
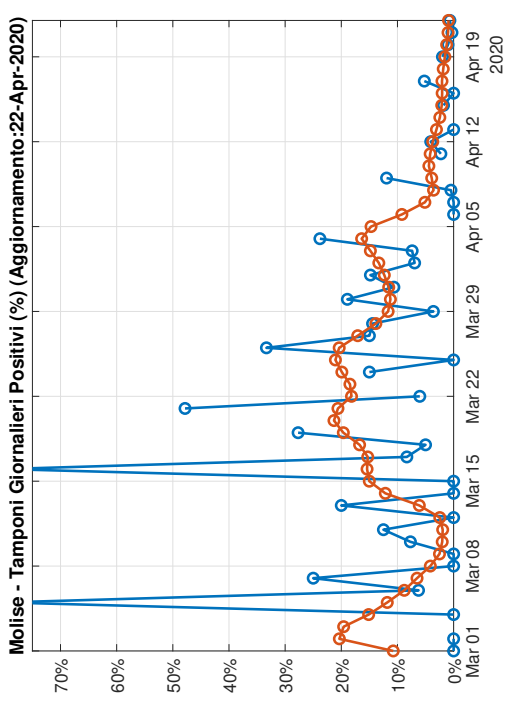
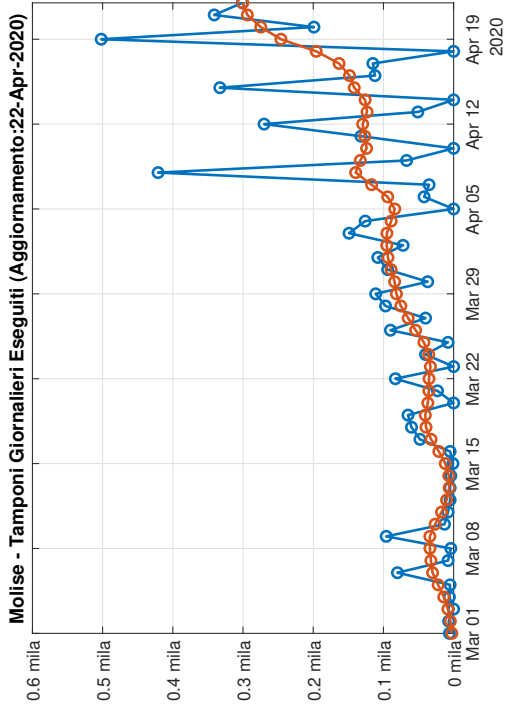
# 1.17 Calabria





# 1.18 Molise





# 1.19 Basilicata

